

Catalogue :
OTHER REFRIGERATION

Chapter :
DISPLAY TRAYS

Article :
VTP-175 C-SHUSI Incorporated Curve Gris

Code:
19005483

<u>DIMENSIONS AND WEIGHTS</u>		<u>Net dimensions</u>	<u>Packed</u>
Length	mm	1.732,00	480,00
Depth	mm	415,00	1.790,00
Height	mm	278,00	480,00
Weight	kg	55,00	57,00
Volume	m3	0,20	4,12

<u>ELECTRICITY</u>		<u>50Hz</u>	
Power			0,18 kW
Connections	230 V. 1+N+T	2X1,5+T - 2 A	
	230 V. III+T	3X1,5+T - 16 A	
	400 V. III+N+T	4X1,5+T - 10 A	

GAS Not necessary

WATER Not necessary

STEAM Not necessary

AIR Not necessary

Refrigeration power **R-134a**
0,178

Climat class **3**

SOUND LEVEL **< 65,00 db**

CERTIFICATES **SGS-2103-0906-1**

INSTALLATION - CONNECTIONS **Ø**
► ELECTRICITY **SI**

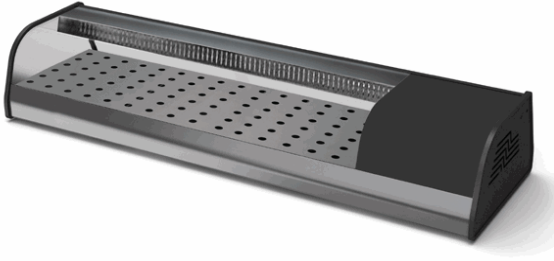
DESCRIPTION

OVER COUNTER DISPLAY CASES, VTP-175 C - SUSHI

SPECIFICATIONS

Perforated stainless steel inner tray for food.
Anodized aluminium outside panels. Glass with PVC on the sides.
Curved glass cover and glass sliding doors.
40 kg/m3 injected polyurethane isolation. CFC free.
Static cooling system.
Double built in evaporation system by means of bottom tray and a copper pipe on the surface of the curved glass cover.
Emergency waste water drainage.
Electronic thermostat for temperature control.
Shielded inner lighting system.
Lighted power switch.
Working temperature: -1 °C, +2 °C (Room temperature: 27 °C).

Glass type: Bended
Cooling unit type: Built-in
Electricity consumption: 175 W
Coolant: R-134a
Dimensions: 1.732x415x278 mm



Catalogue :
OTHER REFRIGERATION

Chapter :
DISPLAY TRAYS

Article :
VTP-175 C-SHUSI Incorporated Curve Gris

Code :
19005483

SCHEMA - DIMENSIONS

