



Ref. MX001

SMX 800 E



CE



15 / 75 gal.

TECHNICAL DATA

OUTPUT MAX	1,000 W
SPEED	9,500 R.P.M.
VOLTAGE	115 V or 230 V
TOTAL LENGTH	950 mm / 37.4"
MIXER TOOL LENGTH	680 mm / 26.7"
DIAMETER	125 mm / 4.9"
ACTUAL WEIGHT - SHIPPING WEIGHT	6.7 kg / 14.7 lbs - 8.2 kg / 18 lbs
MIXER TOOL	DETACHABLE

MAINTENANCE

Clean the outside of the tube and the blade protector by passing it under the faucet.

Wash the motor block with a sponge or with a slightly damp cloth.

Never clean this machine with water jet spray.

ADVANTAGES

- Special huge volumes
- The new cooling technology ensures longer life to the mixer
- Detachable mixer tool that can be easily dismantled
- All stainless steel mixer tool and handle support
- Double insulation
- Titanium-plated blade easy to remove
- Easy manipulation into the pot thanks to its specific support bracket
- The continuous function auto run button allows to mix continuously or pulse.
- Possibility to adapt an emulsifying Dynaturbo tool

USE

The SMX 800 E has been designed to work in containers holding up to 300 liters (75 gallons). It allows you to blend purees, mix and emulsify directly in the cooking pot. Indispensable for the preparation of soups, salad dressings, gravy, sauces, mayonnaise, refried beans, batters, and many other products.

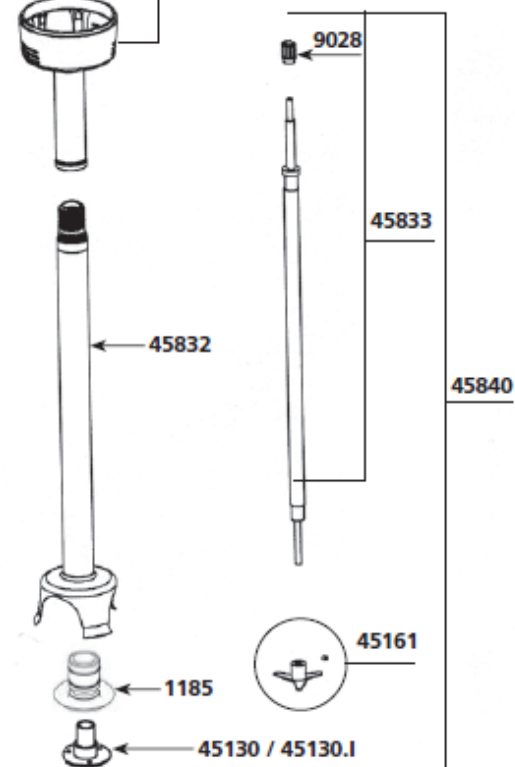
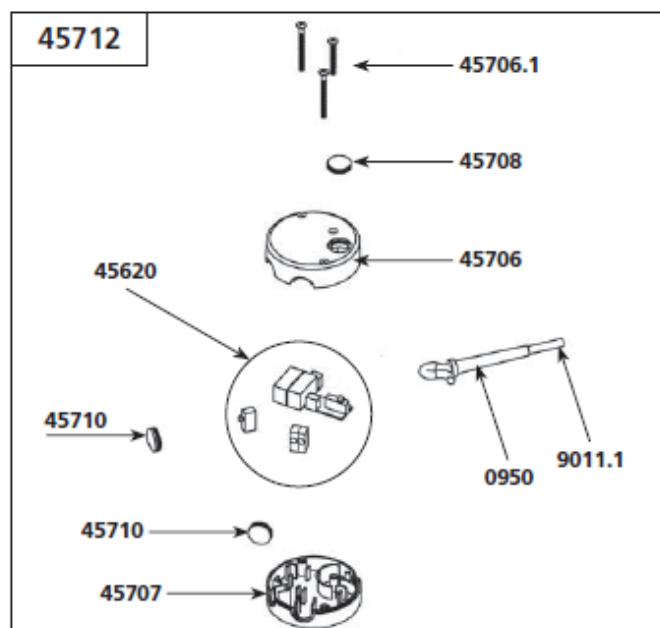
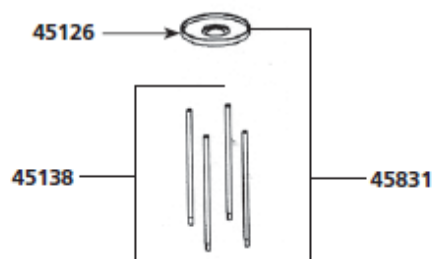
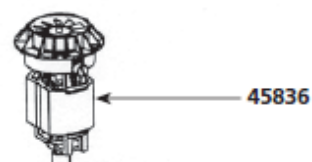
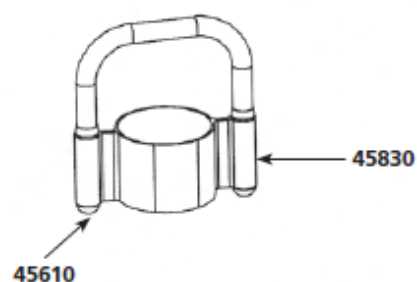
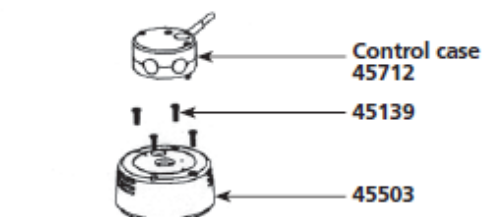
The emulsifying Dynaturbo tool is ideal for ice cream industry. It finely pulverizes fresh or thawed ingredients previously crushed with the mixer tool. Equipped with 2 heads (one for fruit and one for creams or syrups), it allows to obtain perfectly homogeneous and emulsified mixtures.

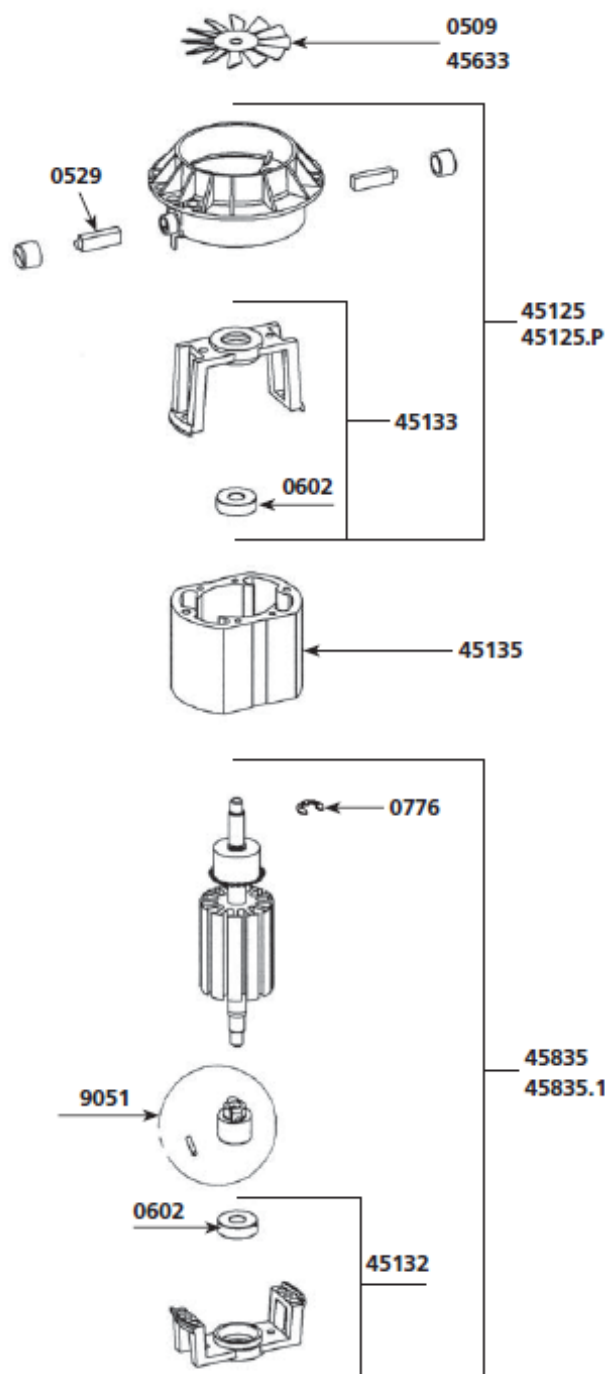


TECHNICAL SHEET

SMX 800 E MIXER

Parts list	Code
Aluminium Fan	0509
Carbon brushes (pair)	0529
Ball bearing	0601
Motor ball bearing	0602
Self-lubricating ring	0603
Waterproof seal	0607
O. ring	0610
Toric seal	0641
Rubber washer	0760
Clips	0776
Washer & bolt for fan	0777
Wall bracket	0862
Strain relief 230 V	0950
Strain relief 115 V	0950.1
ID label 230 V	1073
ID label 115 V	1074
Bearing holder + seal	1185
Fan housing Alu	45125
Fan housing Plastic	45125.P
Double isolation plate	45126
Lower bearing assembly	45130
Complete stainless steel lower bearing	45130.I
Lower motor casing	45132
Upper motor casing	45133
Stator 230 V	45135
Stator 115 V	45135.1
Stator screws(2)	45137
Braces (4)	45138
Brace screws (4)	45139
Cutter blade w/ screw	45161
Squeezing washer (4)	45230
Top housing	45503
Handle cap (2)	45610
Circuit board 230 V	45620





Parts list

Code

Plastic fan	45633
Circuit board 115 V	45620.1
Top housing (orange plastic piece)	45706
Screws control case set	45706.1
Lower housing (orange plastic piece)	45707
Handle cap protector (unit)	45708
Handle cap protector (unit)	45710
Complete housing w/ screws	45711
Complete control casing 230V	45712
Complete control casing 115V	45712.1
Sleeve & complete handle & label & cap	45830
Lower housing	45831
Foot assembly w/ bearing assembly	45832
Shaft & ball bearing	45833
Kit w/ shaft, lower bearing, coupler, cutter	45834
Rotor 230 V	45835
Rotor 115 V	45835.1
Motor 230 V	45836
Motor 115 V	45836.1
Complete foot assembly	45840
Ball bearing ring	7912
Power cord 230 V	9011.1
Motor & shaft drive sprocket	9028
Power cord 115 V	9040.1
Coupling casing + pin	9051
Power cord (Australian)	9066.1
Power cord (UK)	9067.1
Lower bearing screws (3)	9902
Stainless steel lower bearing screws (3)	9902.1

