

Troughs



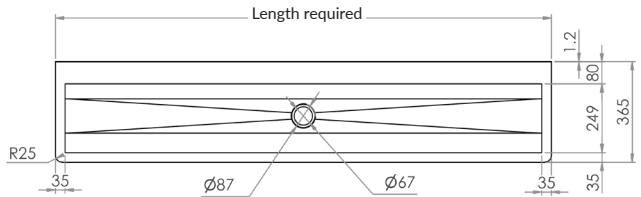
Walls End Pattern Trough Off the Shelf



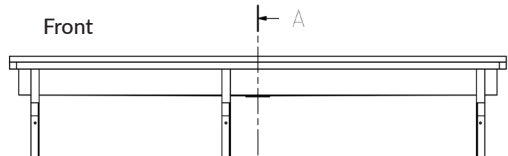
PT-7

- 900mm, 1200mm, 1500mm, 1800mm and 2400mm available off the shelf with centre outlet
- Constructed from 1.2mm 304 grade satin stainless steel
- Tap holes as required
- Available pre-plumbed
- Radius external corners
- 300mmH flat splashback available on request
- Wall brackets manufactured from stainless flat bar with pre-drilled fixing holes
- Custom sizes available

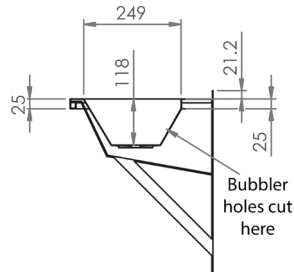
Top



Front



Side



Optional pre-plumbing available with your choice of tapware

Pillar taps

45° tapware



Suggested mounting height for drinking trough:

Infant - 550mm

Primary - 700mm

Secondary - 900mm

Suggested mounting height for wash trough:

Infant - 550mm

Primary - 650mm

Secondary - 700mm