

# GAS SALAMANDER & CHARGRILL

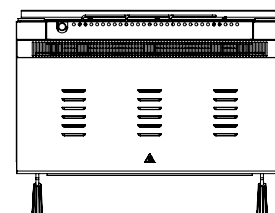
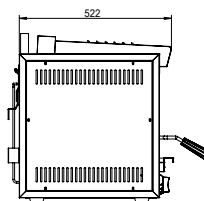
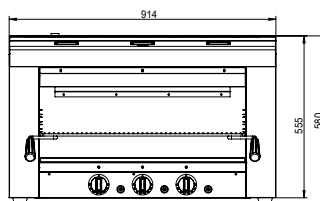
- 3 powerful ceramic infrared burners
- Auto ignition and pilot light
- Flame failure shut-off
- Heavy duty stainless steel construction

- Cavity Size: 680x410x395mm (WxDxH)
- Grill area: 630x400mm (WxD)
- Great for steak & seafood grill
- Matching stainless steel stand available

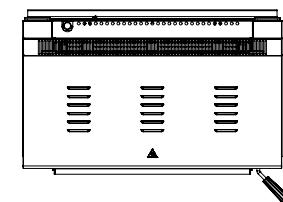
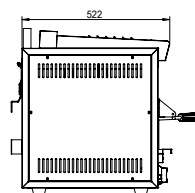
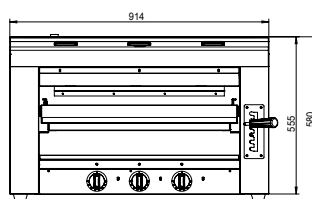
- REB-03E includes heavy duty adjustable cast iron cooking surface
- Safe and easy tray lifting system on REB-03E
- Gas connection under appliance 30mm from right side rear



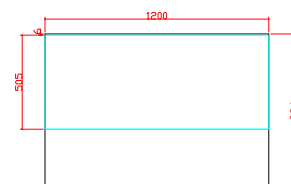
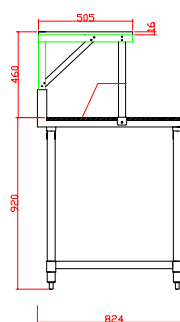
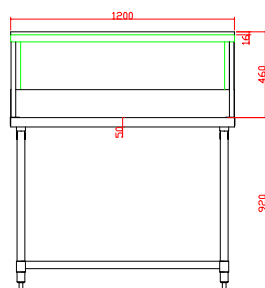
REB-02E / REB-02ELPG



REB-03E / REB-03ELPG



SMB-8-1200



Code	Gas Type	Dimensions (WxDxH mm)	Weight (kg)	Regulator Size	Consumption (MJ/h)
<b>Removable Chrome Plated Shelf</b>					
REB-02E	NG	914x522x580	65	3/4"	42
REB-02ELPG	LPG	914x522x580	65	3/4"	42
REB-03E	NG	914x522x580	70	3/4"	42
REB-03ELPG	LPG	914x522x580	70	3/4"	42
<b>Salamander Stand</b>					
SMB-7-0900	—	900x700x1380	30	—	—
SMB-8-1200	—	1200x824x1380	37	—	—

• Gas equipment must be commissioned by an authorised technician.  
 Prices and specifications are subject to change without notice. Pictures are for illustrative purpose and final product may differ