

S/S PREMIUM RANGE BENCH DRAWER



DR-01/A



DR-02/A

Bench Length

600
900
1200
1500
1800
2100
2400

Drawer Fitting Positions No. of Drawers

0
1
1
1
1
2
2

Position/s

-
Centre
Centre
Centre
Centre
Left & Right
Left & Right

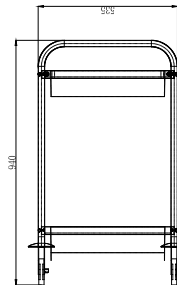
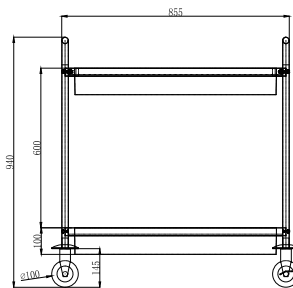


Code	Drawer(s)	Dimensions (WxDxH mm)
DR-01/A	1	480x480x225
DR-02/A	2	480x480x410

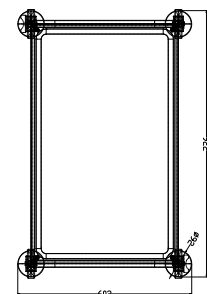
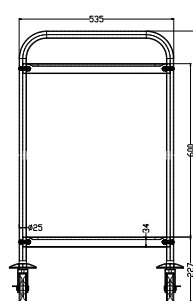
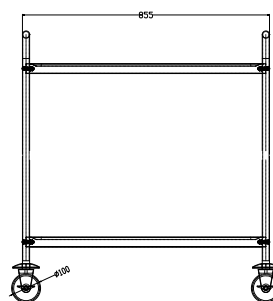
S/S TROLLEYS

- Frames are 25mm²
- Four castors (two lockable)
- Come with instruction manual & tools
- Supplied flat-packed for ease of transport

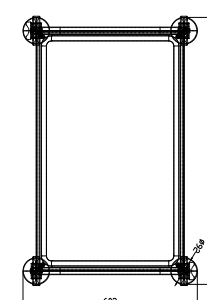
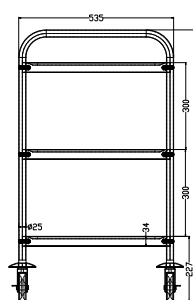
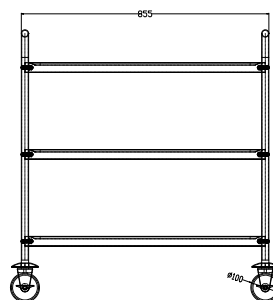
YC-102D



YC-102



YC-103



Code	Shelves	Capacity (kg)	Dimensions (WxDxH mm)
YC-102D	2	80	855x535x940
YC-102	2	80	855x535x930
YC-103	3	120	855x535x930

Prices and specifications are subject to change without notice. Pictures are for illustrative purpose and final product may differ