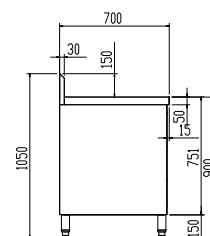
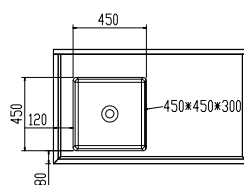
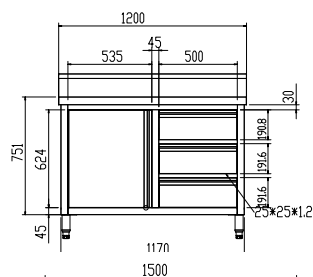


304 S/S KITCHEN TIDY CABINET

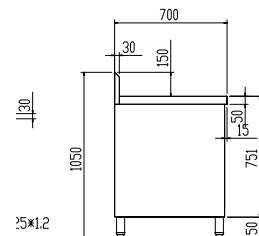
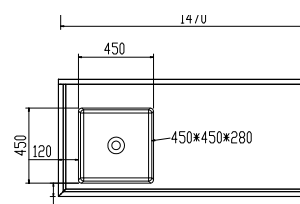
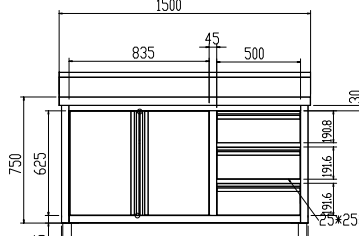
- 700mm deep × 900mm high + 150mm splashback
- 90mm Ø drain hole
- "Punched" Bowls
- Bowl size: 450mmW×450D×300H
- Pre-assembled with all welded joints
- Top 1.2mm; SUS304 grade s/s
- Doors & drawers are 0.9mm S/S
- Tops have reinforced lining
- Cabinets come fully assembled



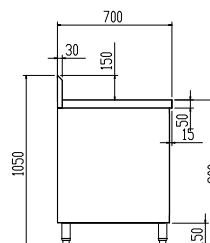
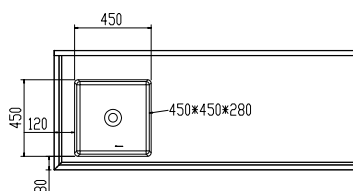
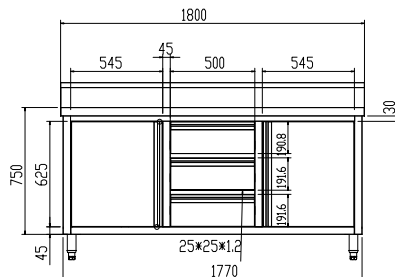
SC-7-1200L-H



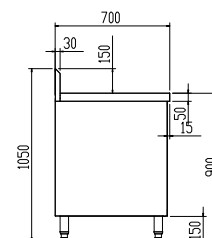
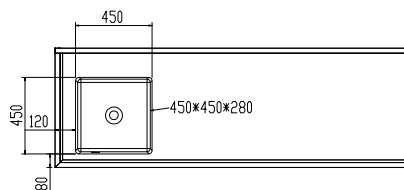
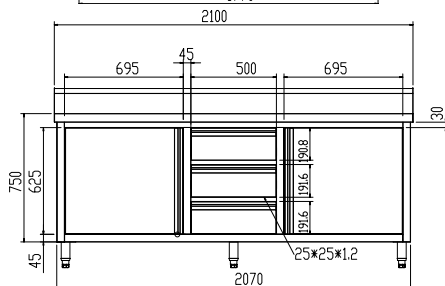
SC-7-1500L-H



SC-7-1800L-H



SC-7-2100L-H



Reverse CAD drawings for Right hand Models

Code	Dimensions (WxDxH mm)
Single Sink - Left	
SC-7-1200L-H	1200x700x900+150
SC-7-1500L-H	1500x700x900+150
SC-7-1800L-H	1800x700x900+150
SC-7-2100L-H	2100x700x900+150

Code	Dimensions (WxDxH mm)
Single Sink - Right	
SC-7-1200R-H	1200x700x900+150
SC-7-1500R-H	1500x700x900+150
SC-7-1800R-H	1800x700x900+150
SC-7-2100R-H	2100x700x900+150

Prices and specifications are subject to change without notice. Pictures are for illustrative purpose and final product may differ