

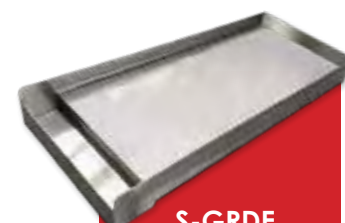
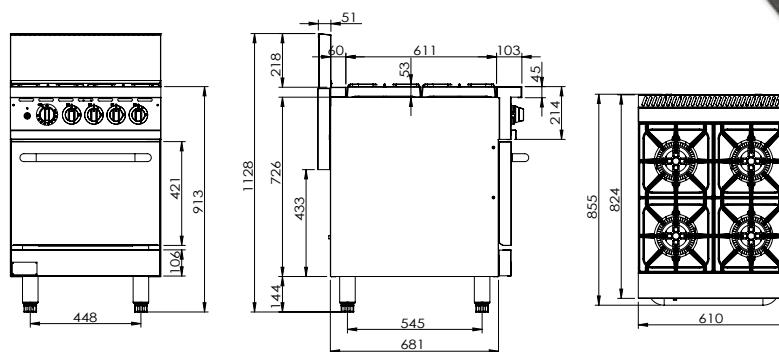


GAS 800 SERIES RANGE WITH OVEN

- Stainless steel front, galvanized sides
- Cast iron open burner
- Versatile heavy duty cast iron trivets, suitable for both woks and pans
- Thermostat (100°C- 300°C) controlled oven
- Welded frame structure for best stability
- Flame failure control valve
- 12" x12"(30x30cm) cast iron grate
- Adjustable heavy duty legs
- Anti-clogging pilot cover under the grate
- A pull-out crumb tray with angled handle in the front
- U shape oven burner
- Thermal couple safety valve for the oven
- Stainless steel oven door with insulation
- Stainless steel handle for bottom oven
- Kick plate at the bottom for easy access for servicing

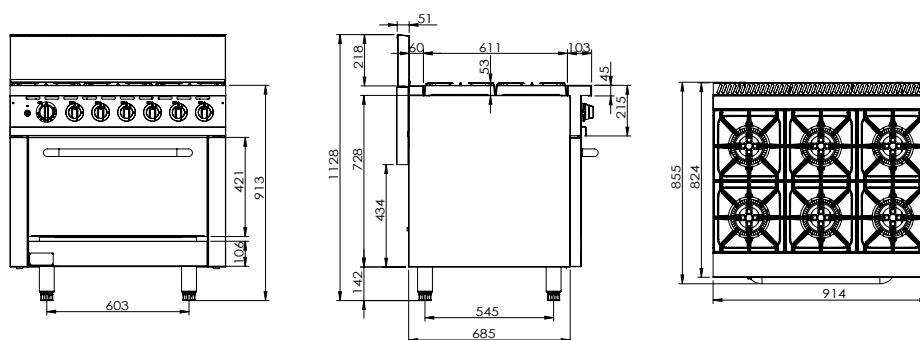


GBS4T / GBS4TLPG



S-GRDE
Simply sits over 2 burners and has removable drip tray

GBS6T / GBS6TLPG



Code	Gas Type	Dimensions (WxDxH mm)	Oven Dimensions (WxDxH mm)	Weight (kg)	Regulator Size	Consumption (MJ/h)
4 Gas Burner with Large Oven						
GBS4T	NG	610x855x1128	518x655x350	120	3/4"	162
GBS4TLPG	LPG	610x855x1128	518x655x350	120	3/4"	168
6 Gas Burner with Large Oven						
GBS6T	NG	914x855x1128	673x655x350	166	3/4"	228
GBS6TLPG	LPG	914x855x1128	673x655x350	166	3/4"	234
Lay On Griddle Plate						
S-GRDE	—	300x730x80+10mm locators		—	—	—

• Gas equipment must be commissioned by an authorised technician.
Prices and specifications are subject to change without notice. Pictures are for illustrative purpose and final product may differ