

650 SERIES EQUIPMENT



Example of optional bench stand
shown on FlexiDrawer Counter
Fridges CRB1-2 + CRB1-3

• Gas equipment must be commissioned by an authorised technician.
Prices and specifications are subject to change without notice. Pictures are for illustrative purpose and final product may differ

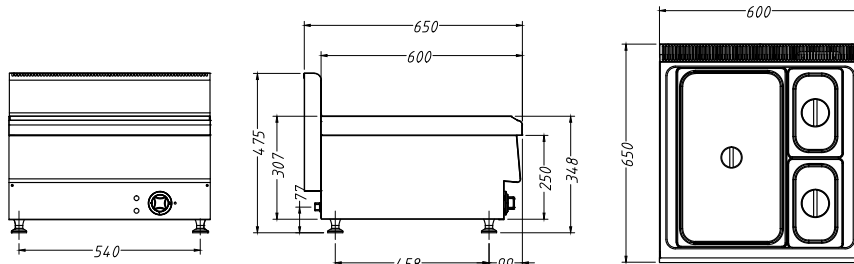
650 SERIES - ELECTRICAL BAIN MARIE & PASTA COOKER



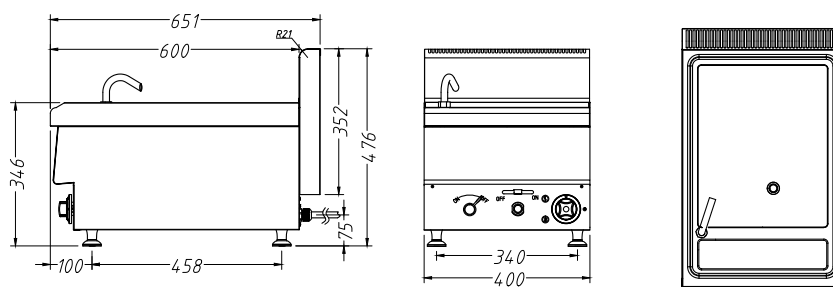
- Stainless steel construction
- Compact design
- Sturdy adjustable feed
- Food van friendly
- JUS-DM-2 also available in gas, suitable for 6 or 9 baskets



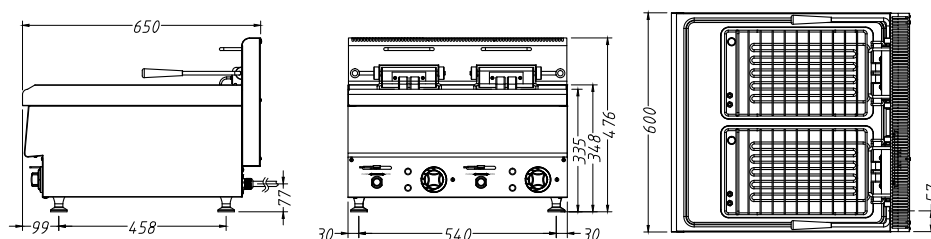
JUS-TY-2



JUS-DM-2



JUS-TEF-2



Code	Gas Type	Dimensions (WxDxH mm)	Weight (kg)	Voltage	Power (W/A)
Bain Marie with 1x 1/1 + 2x 1/4 GN Pan & Lid					
JUS-TY-2	—	600x650x475	24.4	240	1200/10
Pasta Cooker 15L					
JUS-DM-2	—	400x650x475	25.6	415	5400/3~N
Electric Fryer 2x 13L					
JUS-TEF-2	—	600x650x475	35	415	17000/3~N

• Gas equipment must be commissioned by an authorised technician.

Prices and specifications are subject to change without notice. Pictures are for illustrative purpose and final product may differ