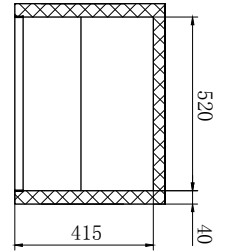
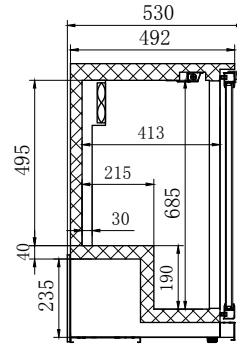
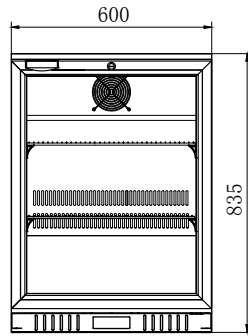
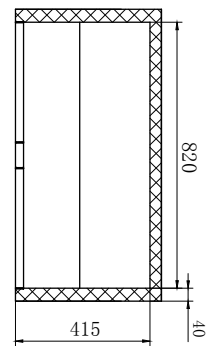
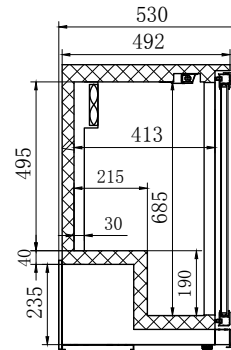
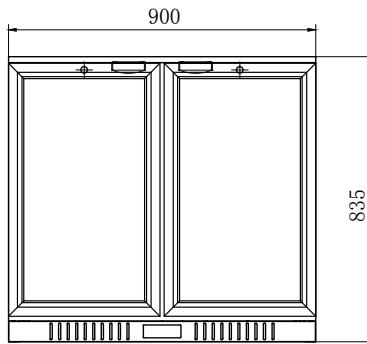


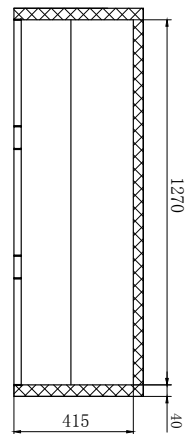
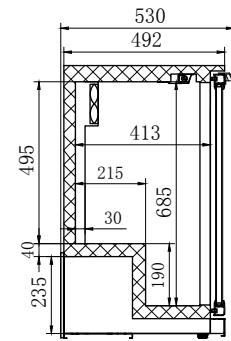
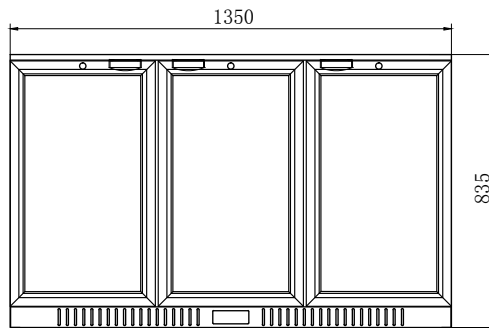
LG-138HC



LG-208HC



LG-330HC



Code	GEMS Star Rating	Litre	Doors	Dimensions (WxDxH mm)	Weight (kg)	Temperature Range	Ambient/ RH%	Voltage	Power (W/A)
Glass doors									
LG-138HC	10	138	1	600x530x835	52	+2 to +8	32/60	240	160/10
LG-208HC	9	208	2	900x530x835	75	+2 to +8	32/60	240	280/10
LG-330HC	9	330	3	1350x530x835	92	+2 to +8	32/60	240	315/10

Allow 100mm clearance for installation, all vents must be left clear. Prices and specifications are subject to change without notice. Pictures are for illustrative purpose and final product may differ