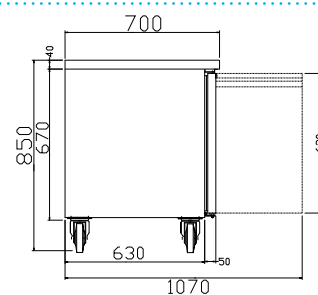
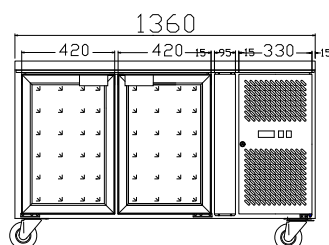
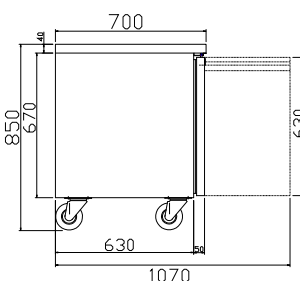
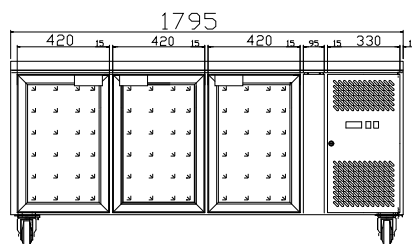


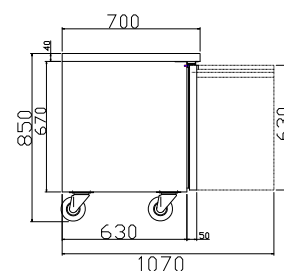
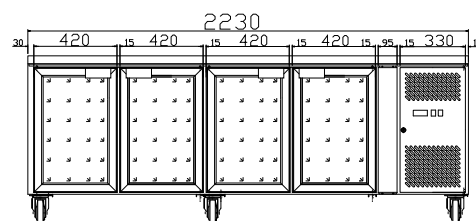
GN2100TNG



GN3100TNG



GN4100TNG



Optional Splashback Top



Optional 2 Drawer



Optional 3 Drawer

Code	Litre	Doors	Dimensions (WxDxH mm)	Weight (kg)	Temperature Range	Ambient/ RH%	Voltage	Power (W/A)
Glass door fridges with LED lighting inside								
GN2100TNG	313.5	2	1360x700x850	98	-2 to +8	35/60	240	350/10
GN3100TNG	464.6	3	1795x700x850	134	-2 to +8	35/60	240	350/10
GN4100TNG	615.8	4	2230x700x850	153	-2 to +8	35/60	240	350/10

Optional Splashback Top

GN2100-WBB

GN3100-WBB

GN4100-WBB

Optional Drawers for solid door units

GN-2DRAWER

GN-3DRAWER

Allow 100mm clearance for installation, all vents must be left clear.
Prices and specifications are subject to change without notice. Pictures are for illustrative purpose and final product may differ