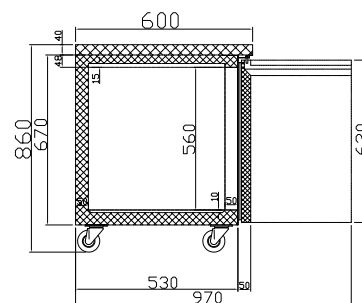
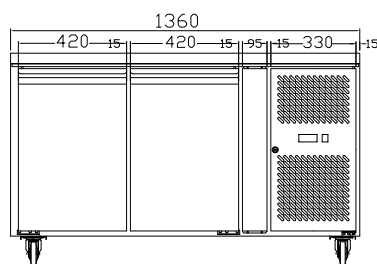


COMMERCIAL WORKBENCH FREEZERS

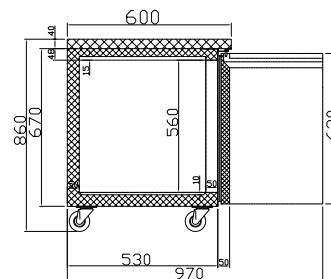
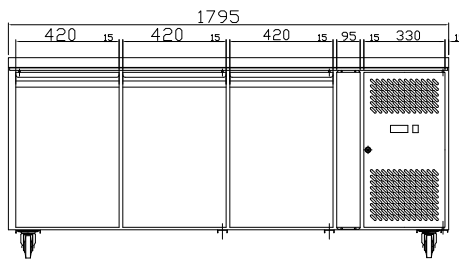
- CFC Free refrigerant and foam
- Stainless steel interior & exterior
- Electronic thermostat and digital LED temperature display
- Auto defrosting and auto evaporation of condensation water
- Fan-forced evaporator cooling
- Magnetic gaskets can be replaced without any tools
- Bottom with round edges for easy cleaning
- One level of shelving plus floor



FE2100BT



FE3100BT



Optional Splashback Top

Code	Litre	Doors	Dimensions (WxDxH mm)	Weight (kg)	Temperature Range	Ambient/ RH%	Voltage	Power (W/A)
------	-------	-------	-----------------------	-------------	-------------------	--------------	---------	-------------

Workbench freezers

FE2100BT	260	2	1360x600x860	95	-18 to -22	38/50	240	750/10
FE3100BT	386	3	1795x600x860	135	-18 to -22	38/50	240	740/10

Optional Splashback Top

FE2100-WBB

FE3100-WBB

FE4100-WBB

Allow 100mm clearance for installation, all vents must be left clear. Prices and specifications are subject to change without notice. Pictures are for illustrative purpose and final product may differ