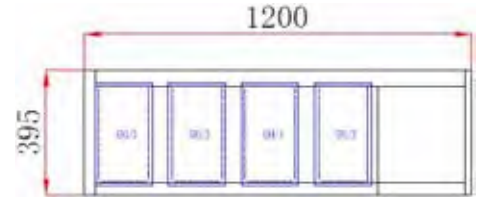
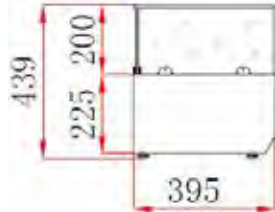


# FLAT GLASS SALAD BENCH TOPS

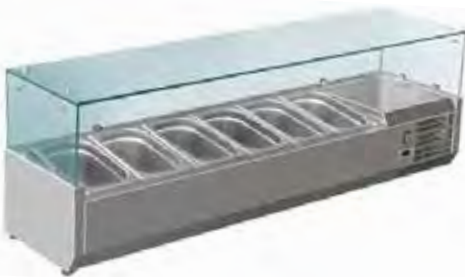
- Stainless steel interior and exterior
- Donper compressor
- Heavy duty condenser fans
- Dixell digital temp controller
- Angled pan positions
- Maximum pan depth: 150mm
- Toughened glass canopy
- Refrigerant R600a
- Pans not included. Select on page 286-287



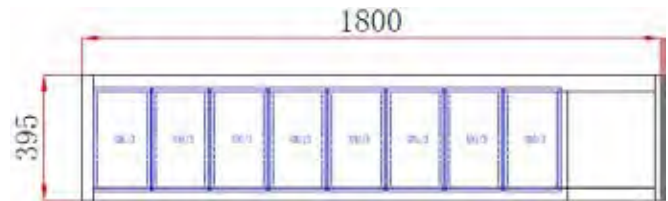
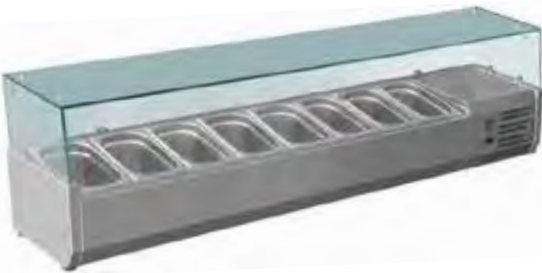
XVRX1200/380



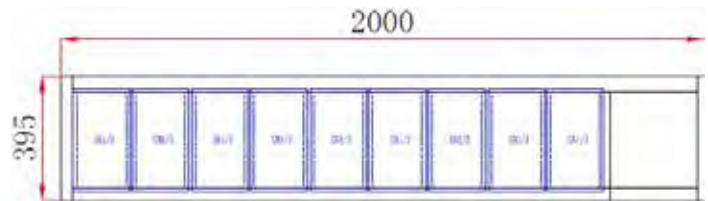
XVRX1500/380



XVRX1800/380



XVRX2000/380



\*Pan covers must be used to ensure correct operating temperature.

Code	Pans	Dimensions (WxDxH mm)	Weight (kg)	Temperature Range °C	Ambient/ RH%	Voltage	Power (W/A)
<b>4x1/3 pans</b>							
XVRX1200/380	4 x 1/3	1200x395x439	40.5	+2 to +8	32/60	240	110/10
<b>6x1/3 pans</b>							
XVRX1500/380	6 x 1/3	1500x395x439	48	+2 to +8	32/60	240	110/10
<b>8x1/3 pans</b>							
XVRX1800/380	8 x 1/3	1800x395x439	50.5	+2 to +8	32/60	240	110/10
<b>9x1/3 pans</b>							
XVRX2000/380	9 x 1/3	2000x395x439	60	+2 to +8	32/60	240	110/10

Cold tops are holding units only, product needs to be pre-chilled to less than 5°C. Prices and specifications are subject to change without notice. Pictures are for illustrative purpose and final product may differ