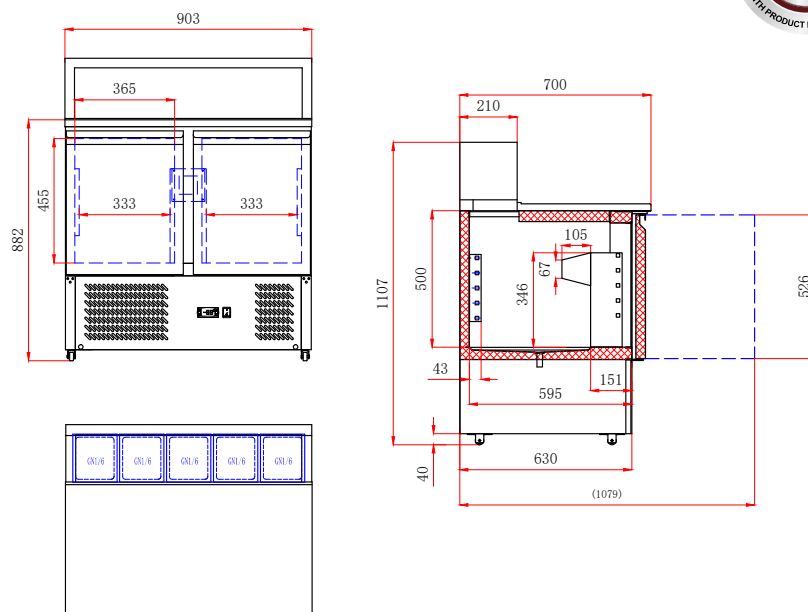


SALADETTES / SANDWICH BAR

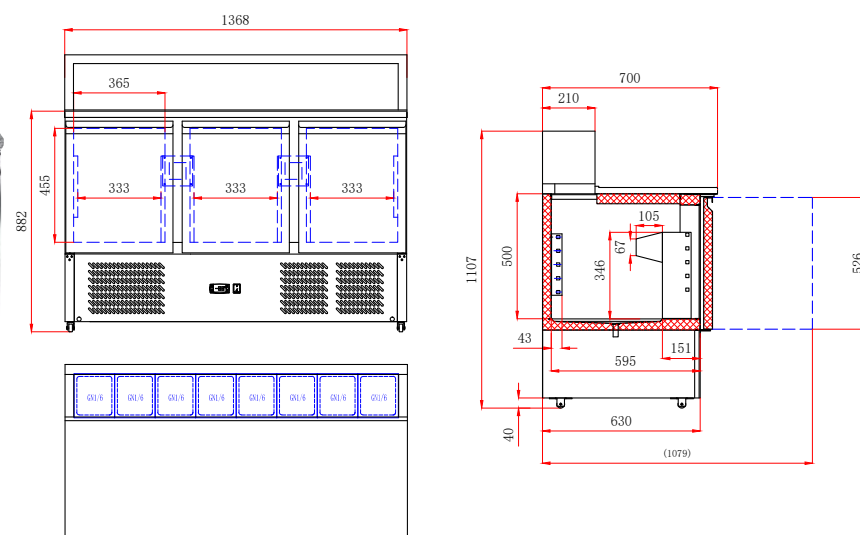
- Stainless steel interior and exterior with rounded corners for easy cleaning
- Open cooling top compatible for GN1/6 pans (Pans and lids are not included)
- 1 * GN1/1 shelf per door
- Replaceable magnetic door seals
- User friendly Digital controls
- Heavy duty castors
- Fan assisted cooling
- Granite stone work top
- Pans and pan covers must be used to ensure correct operating temperature
- Pans not included
Select on page 286-287



XGNS900E



XGNS1300E



Code	Dimensions (WxDxH mm)	Weight (kg)	Temperature Range °C	Ambient/ RH%	Voltage	Power (W/A)
2 Door - 5x1/6 GN pans						
XGNS900E	903x700x1107	106	+2 to +8	32/60	240	180/10
3 Door - 8x1/6 GN pans						
XGNS1300E	1368x700x1107	166	+2 to +8	32/60	240	255/10

Prices and specifications are subject to change without notice. Pictures are for illustrative purpose and final product may differ