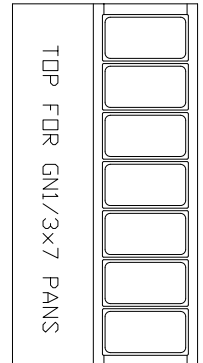
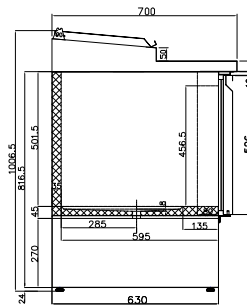
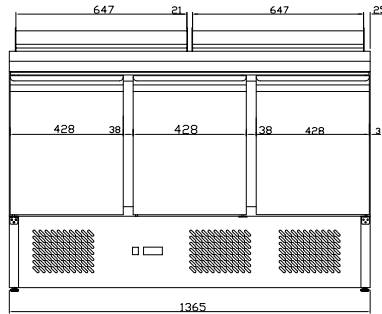


DELUXE S/S PIZZA, SALAD & SANDWICH BAR

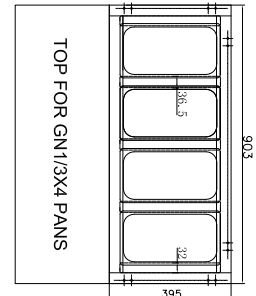
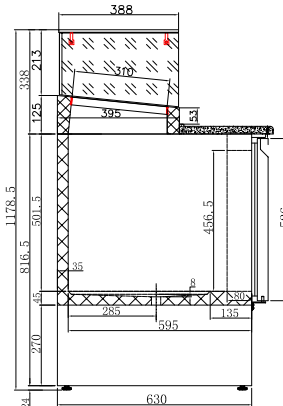
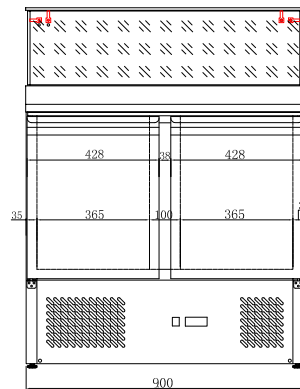
- Stainless steel exterior & interior with gal metal back
- Digital temp. controls & readout
- One level of shelving plus floor
- Fan assisted cooling
- Auto defrost
- Self evaporating drainage
- Touch close doors
- Internal constructed rounded for easy cleaning
- Castors
- Ambient 32°C & 60% RH
- Pans not included. Select on page 226



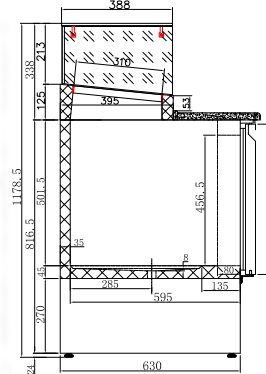
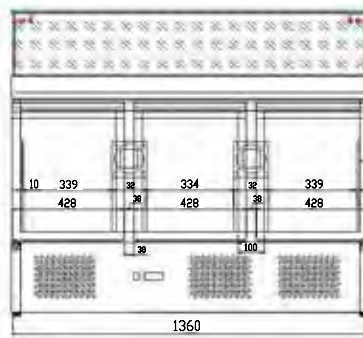
GNS1300D



GNS900E



GNS1300E



*Pan covers must be used to ensure correct operating temperature.

Code	litre	Dimensions (WxDxH mm)	Weight (kg)	Temperature Range °C	Ambient/ RH%	Voltage	Power (W/A)
3 Door Prep Top - 7x1/3 GN pans x 150 deep							
GNS1300D	444	1368x700x1023	120	+2 to +8	32/60	240	230/10
GLASS COVER							
2 Door Salad, Marble Top - 4x1/3 GN pans x 150 deep							
GNS900E	257	903x700x1195	100	+2 to +8	32/60	240	230/10
3 Door Salad, Marble Top - 7x1/3 GN pans x 150 deep							
GNS1300E	437	1368x700x1195	120	+2 to +8	32/60	240	230/10

Cold tops are holding units only, product needs top be pre-chilled to less than 5°C. Prices and specifications are subject to change without notice. Pictures are for illustrative purpose and final product may differ