

# TPP-AT-119D-6-HC

 Pizza Prep Table, 15x 1/3 Top Pans, 6 Drawers + 1 Solid Swing Door



Dimensions		Build		Technical	
External Width (mm)	3029	Door Description	1 Solid Swing Door	Temperature Holding	0.5 : 5°C
External Depth (mm)	854	Number of Drawers	6	Refrigerant	R290
External Height (mm)	1133	Drawers location	Left/Centre (standard) or Right (option)	Voltage / Frequency / Phase	220-240V/50Hz/1
Exclusions	Depth does not include 26 mm for rear bumpers and 42mm for cutting board overhang.	Exterior Construction	Stainless steel front, top & lids, aluminium sides and rear	Amps	3.3
Gross Volume (Litres)	1124	Interior Construction	Clear coated aluminium, stainless steel base	60Hz model Amps	3.6
Supplied Shelves	2	Air Intake Position	Front	Wattage	759
Shelf Size (L x D mm)	Left & Right: 600 x 712. Central: 648 x 712	Ventilation Position	Front	60Hz model Wattage	828
Internal Net Height (mm)	550	Clearance Required	Zero back and sides	Defrost Type	Auto
Top Pans Supplied (max depth mm)	15x 1/3 GN (150)	Cord Length (Meters)	3.35		
Per Drawer Capacity (max depth mm)	1x 2/1 GN (200)	Standard w/ Locks	Not standard (SPEC3 option)		
Unpackaged Weight (kg)	346				
Packaged Weight (kg)	357				
Packaged Dimensions (W x D x H mm)	3188 x 966 x 1321				
Cutting Board (L x D mm)	3029 x 496				
Supplied Supports	ø 127 mm castors (146 mm height)				



Specifications subject to change without notice.  
 Technical data above related to energy use based on testing of 50Hz or Dual Frequency models  
 Chart dimensions rounded up to the next whole millimeter (inches rounded up to the 1/8")

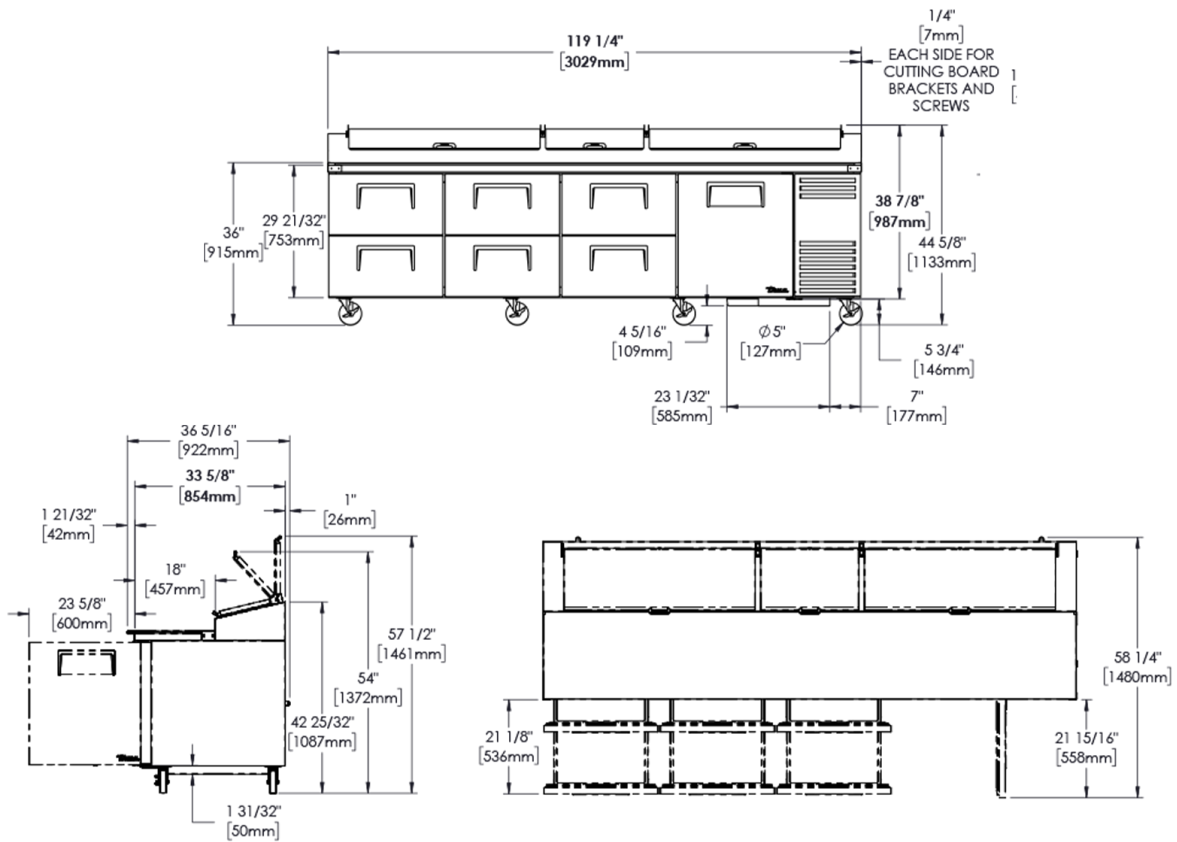
UK & Ireland [0800 783 2049](tel:08007832049)  
 EMEA [+41 61 563 07 05](tel:+41615630705)  
 Australia [+61 2 9619 9999](tel:+61296199999)

[TFIUK@truemfg.com](mailto:TFIUK@truemfg.com)  
[TrueCHCustomerService@truemfg.com](mailto:TrueCHCustomerService@truemfg.com)  
[TrueRefAus@truemfg.com](mailto:TrueRefAus@truemfg.com)



# TPP-AT-119D-6-HC

🇬🇧 Pizza Prep Table, 15x 1/3 Top Pans, 6 Drawers + 1 Solid Swing Door



Specifications subject to change without notice.  
 Technical data above related to energy use based on testing of 50Hz or Dual Frequency models  
 Chart dimensions rounded up to the next whole millimeter (inches rounded up to the 1/8")

UK & Ireland [0800 783 2049](tel:08007832049)  
 EMEA [+41 61 563 07 05](tel:+41615630705)  
 Australia [+61 2 9619 9999](tel:+61296199999)

[TFIUK@truemfg.com](mailto:TFIUK@truemfg.com)  
[TrueCHCustomerService@truemfg.com](mailto:TrueCHCustomerService@truemfg.com)  
[TrueRefAus@truemfg.com](mailto:TrueRefAus@truemfg.com)

