

TPP-AT-119D-4-HC

 Pizza Prep Table, 15x 1/3 Top Pans, 4 Drawers + 2 Solid Swing Doors



| Dimensions | | Build | | Technical | |
|------------------------------------|--|-----------------------|---|-----------------------------|-----------------|
| External Width (mm) | 3029 | Door Description | 2 Solid Swing Doors | Temperature Holding | 0.5 : 5°C |
| External Depth (mm) | 854 | Number of Drawers | 4 | Refrigerant | R290 |
| External Height (mm) | 1133 | Drawers location | Left/Centre (standard) or Centre/Right (option) | Voltage / Frequency / Phase | 220-240V/50Hz/1 |
| Exclusions | Depth does not include 26 mm for rear bumpers and 42mm for cutting board overhang. | Exterior Construction | Stainless steel front, top & lids, aluminium sides and rear | Amps | 3.3 |
| Gross Volume (Litres) | 1124 | Interior Construction | Clear coated aluminium, stainless steel base | 60Hz model Amps | 3.6 |
| Supplied Shelves | 4 | Air Intake Position | Front | Wattage | 759 |
| Shelf Size (L x D mm) | Left & Right: 600 x 712. Central: 648 x 712 | Ventilation Position | Front | 60Hz model Wattage | 828 |
| Internal Net Height (mm) | 550 | Clearance Required | Zero back and sides | Defrost Type | Auto |
| Top Pans Supplied (max depth mm) | 15x 1/3 GN (150) | Cord Length (Meters) | 3.35 | | |
| Per Drawer Capacity (max depth mm) | 1x 2/1 GN (200) | Standard w/ Locks | Not standard (SPEC3 option) | | |
| Unpackaged Weight (kg) | 318 | | | | |
| Packaged Weight (kg) | 329 | | | | |
| Packaged Dimensions (W x D x H mm) | 3188 x 966 x 1245 | | | | |
| Cutting Board (L x D mm) | 3029 x 496 | | | | |
| Supplied Supports | ø 127 mm castors (146 mm height) | | | | |



Specifications subject to change without notice.
 Technical data above related to energy use based on testing of 50Hz or Dual Frequency models
 Chart dimensions rounded up to the next whole millimeter (inches rounded up to the 1/8")

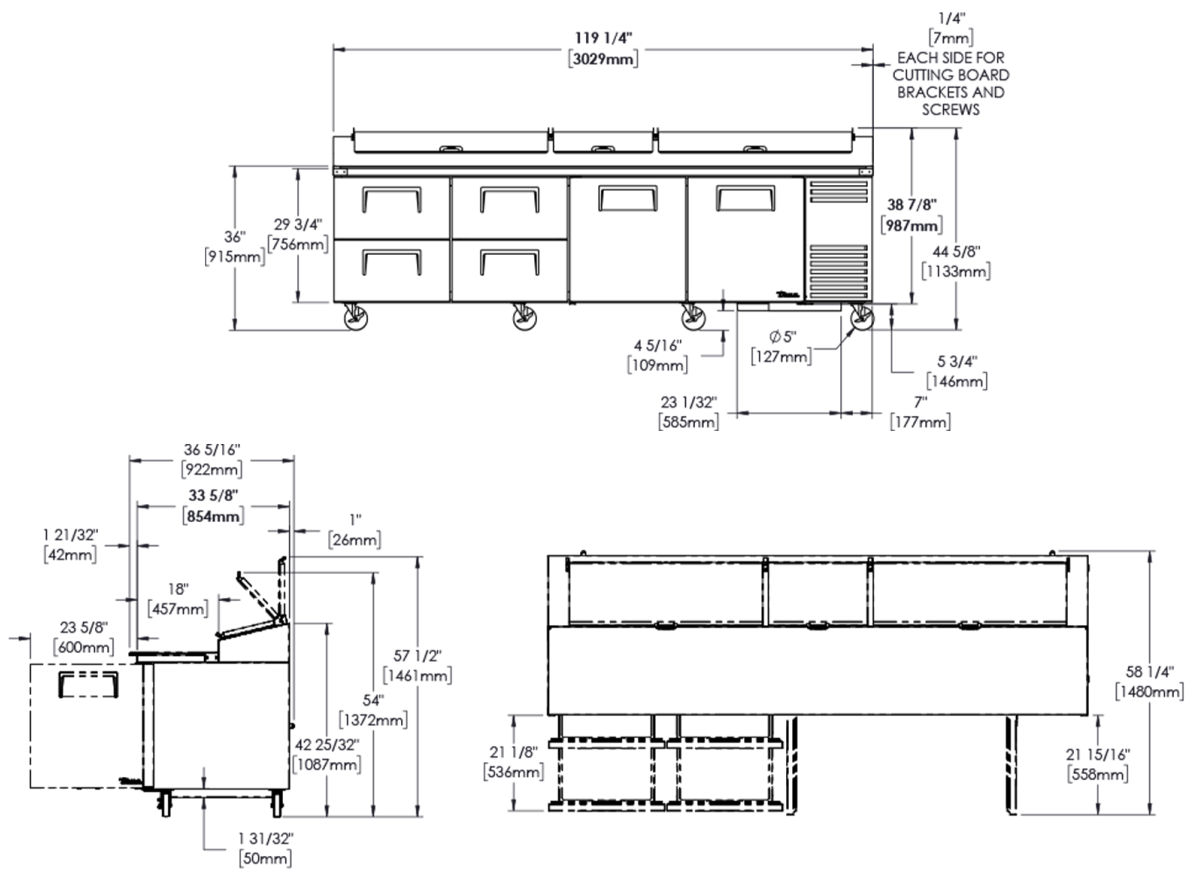
UK & Ireland [0800 783 2049](tel:08007832049)
 EMEA [+41 61 563 07 05](tel:+41615630705)
 Australia [+61 2 9619 9999](tel:+61296199999)

TFIUK@truemfg.com
TrueCHCustomerService@truemfg.com
TrueRefAus@truemfg.com



TPP-AT-119D-4-HC

🇬🇧 Pizza Prep Table, 15x 1/3 Top Pans, 4 Drawers + 2 Solid Swing Doors



Specifications subject to change without notice.
 Technical data above related to energy use based on testing of 50Hz or Dual Frequency models
 Chart dimensions rounded up to the next whole millimeter (inches rounded up to the 1/8")

UK & Ireland **0800 783 2049**
 EMEA **+41 61 563 07 05**
 Australia **+61 2 9619 9999**

TFIUK@truemfg.com
TrueCHCustomerService@truemfg.com
TrueRefAus@truemfg.com

