

TCF1/3-CL-SS-DL-DR-DR

1/1 GN Counter Freezer, 3 Section



| Dimensions | | Build | | Technical | |
|------------------------------------|--|-----------------------|---|-----------------------------|--|
| External Width (mm) | 1865 | Door Description | 3 Solid Swing Doors | Temperature Holding | -23°C |
| External Depth (mm) | 700 | Door Opening | Left Door opens left, Centre Door opens right, Right Door opens right. Configurable and Field Reversible. | Refrigerant | R290 |
| External Height (mm) | 900 | Exterior Construction | Stainless steel front & countertop, aluminium sides & rear | Voltage / Frequency / Phase | 220-240V/50Hz/1 |
| Exclusions | Depth does not include 41mm for door handles. | Interior Construction | Clear coated aluminium, stainless steel base | Amps | 0.7 |
| Net Volume (Litres) | 249 | Air Intake Position | Front | 60Hz model Amps | 1.9 |
| Gross Volume (Litres) | 630 | Ventilation Position | Front | Wattage | 161 |
| Supplied Shelves | 6 | Clearance Required | Zero back and sides | 60Hz model Wattage | 437 |
| Shelf Size (L x D mm) | 530 x 325 | Cord Length (Meters) | 2.74 | Climate Class | 5 |
| Internal Net Height (mm) | 500 | Standard w/ Locks | standard | Operating Statement | Heavy Duty: This appliance is intended for use in ambient temperatures up to 40°C. |
| Unpackaged Weight (kg) | 182 | | | Testing Standard | EN 16825 |
| Packaged Weight (kg) | 193 | | | EEC | C |
| Packaged Dimensions (W x D x H mm) | 2032 x 801 x 1069 | | | EEL | 42.7 |
| Supplied Supports | ø 127 mm castors (152 mm height). Plinth mountable | | | kWh/24hr | 4.49 |
| | | | | kWh/Annum | 1639 |
| | | | | Defrost Type | Auto |



WARRANTY
PARTS, COMPRESSOR AND LABOUR
5 YEARS*




Specifications subject to change without notice.
Technical data above related to energy use based on testing of 50Hz or Dual Frequency models
Chart dimensions rounded up to the next whole millimeter (inches rounded up to the 1/8")

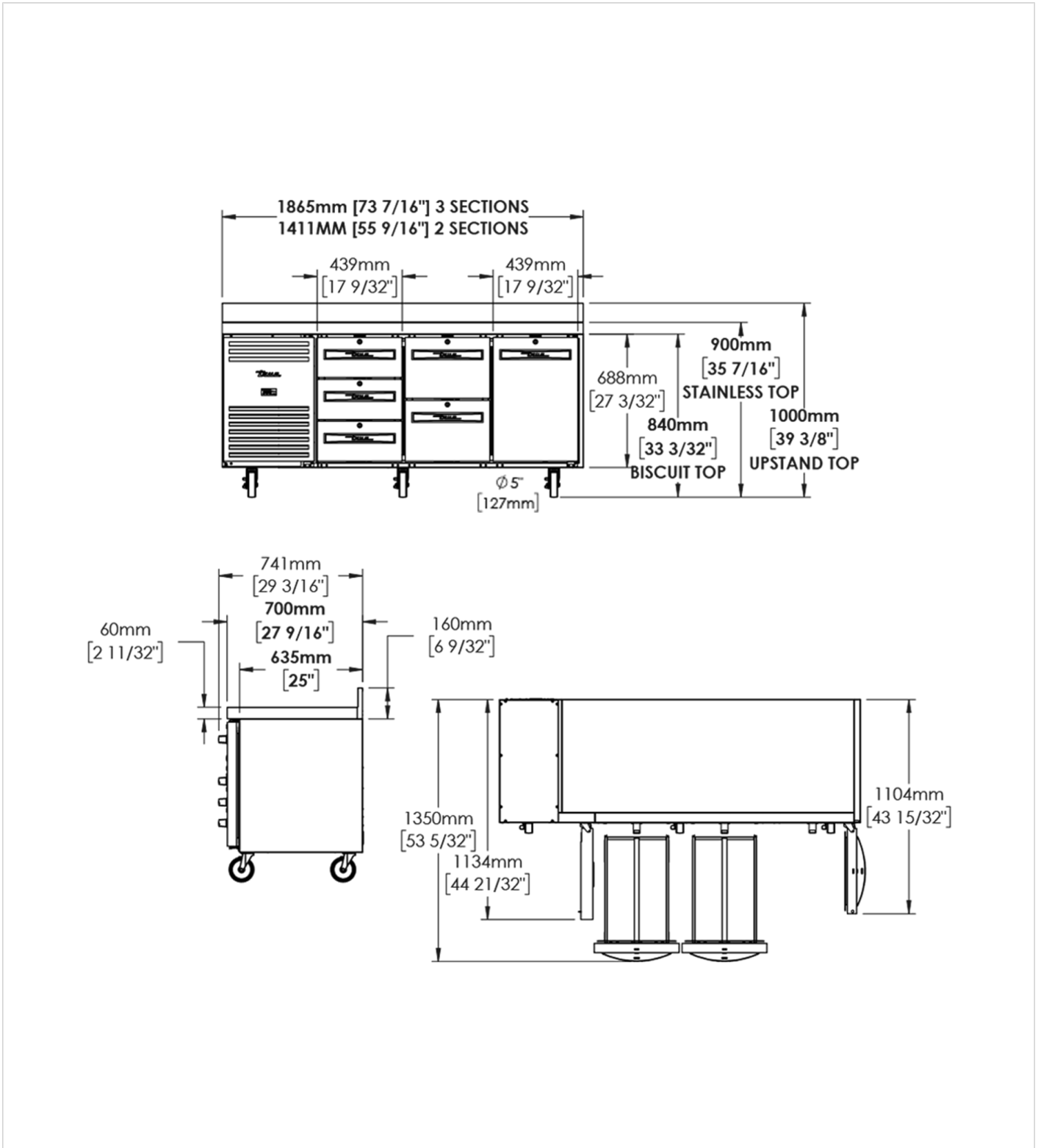
UK & Ireland [0800 783 2049](tel:08007832049)
EMEA [+41 61 563 07 05](tel:+41615630705)
Australia [+61 2 9619 9999](tel:+61296199999)

TFIUK@truemfg.com
TrueCHCustomerService@truemfg.com
TrueRefAus@truemfg.com



TCF1/3-CL-SS-DL-DR-DR

 1/1 GN Counter Freezer, 3 Section



WARRANTY 5 YEARS
PARTS, COMPRESSOR AND LABOUR
 natural refrigerant.

Specifications subject to change without notice.
Technical data above related to energy use based on testing of 50Hz or Dual Frequency models
Chart dimensions rounded up to the next whole millimeter (inches rounded up to the 1/8")

UK & Ireland [0800 783 2049](tel:08007832049)
EMEA [+41 61 563 07 05](tel:+41615630705)
Australia [+61 2 9619 9999](tel:+61296199999)

TFIUK@truemfg.com
TrueCHCustomerService@truemfg.com
TrueRefAus@truemfg.com

