

FAGOR INDUSTRIAL

Catalogue  
**CATERING**

Chapter  
**COOKING**

Model  
**C-E940 380...415V 3N**

19031220

**DIMENSIONS**

	<b>Article</b>		<b>Packed</b>	
Lenght	800	mm	840	mm
Depth	930	mm	1022	mm
Height	290	mm	535	mm
Weight	85,000	kg	101,000	kg
Volume	0,222	m3	0,459	m3

**ELECTRICITY**

Electric power	16,00	kw
Voltage	380...415V	-3N
Three-phase +N 400V wiring	4X4MM2+T	
Frequency	50/60	hz

**4-HOT PLATES ELECTRIC BOILING TOP, C-E940**

Electric top plates are adequate for a variety of containers such as pans, saucepans, etc.

Depending on the container, you may stew, boil, make soup, legumes, scrambled eggs, fried dishes...

2 mm stainless AISI-304 steel embedded top with rounded edges for easy cleaning.

Laser cut and automatic welding for a perfect side to side adjustment of modules with square angle finish.

4 kW power 300 x 300 mm cast iron heating plates tight adjusted to the embedded top stove.

Number of plates: 4.

Power adjustment by 7-position knob. Independent safety thermostat for each plate.

Inner fan to reduce the temperature of the components.

Water-tight and protecting-support controls.

High temperature protector for the chimney made of enamelled cast iron.

Front access to components.

According to European standards for components and panels temperature, efficiencies and combustion, and sanitary regulations (EN-60335 and EN-203)

IPX5 grade water protection equipment.

Maximum power: 16.0 kW

Dimensions: 800 x 930 x 290 mm.

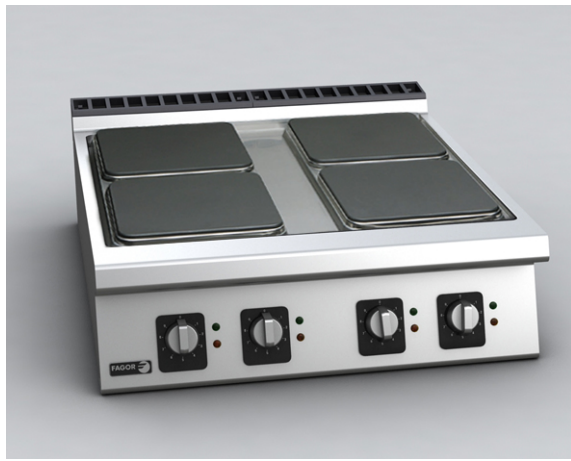


Catalogue  
**CATERING**

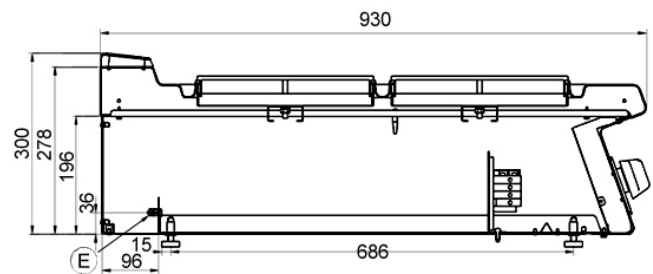
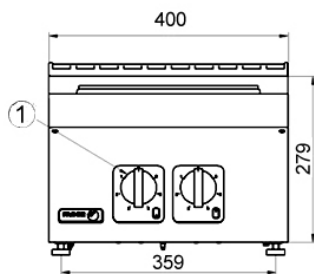
Chapter  
**COOKING**

Model  
**C-E940 380...415V 3N**

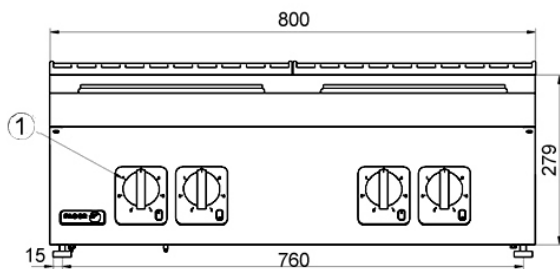
19031220



**C-E920**



**C-E940**



E. Conexión eléctrica  
1. Mando placas M

Electrical connection  
M plates control