

## Tilting jacketed kettle indirect steam heating



POTAGES  
PUDDING  
PASTA AND RICE  
SAUCES  
MASHED POTATOES  
BECHAMEL SAUCE  
PUREE  
JELLY

### TILTING KETTLES FOR LARGE CATERING AND RESTAURANTS

EASYBRATT is a tilting braising pan designed to meet the daily needs of small and medium-sized restaurants, the catering industry and centralised cooking facilities (canteens, community centres, schools, hospitals, etc.). Composed of 38 models with different capacities, this machine for catering is available in gas or electric heating from 50 to 200 litres. The tilting is manually-operated, but can be motorised on request.

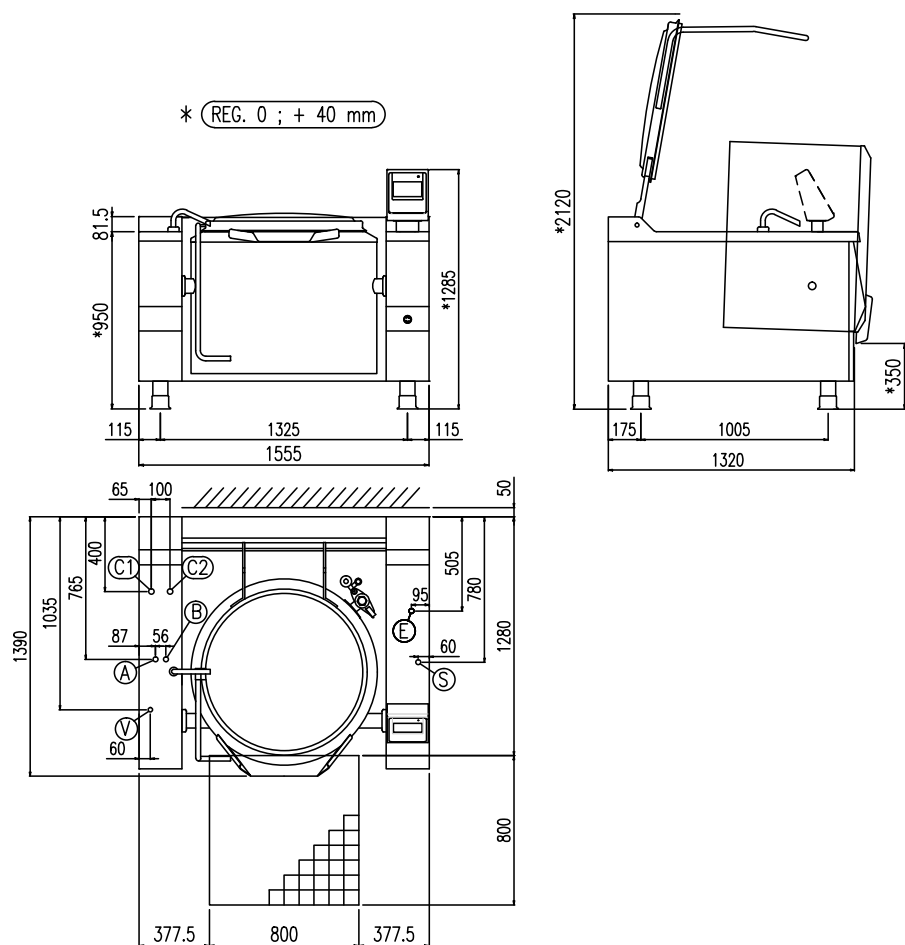
### ANY TYPE OF COOKING IN PERFECT HARMONY, A NEW BENCHMARK THANKS TO BASKETT

Heating is gentle, indirect, thereby allowing you to prepare more delicate dishes and they do not need constant monitoring. An asset in the kitchen that lets you utilise your experience to satisfy high volumes. Efficient, compact and versatile.

|                              |                    |
|------------------------------|--------------------|
| Heating type                 | indirect steam     |
| Capacity (L)                 | 242                |
| Surface (dmq)                | -                  |
| Gas connection (Ø)           | -                  |
| Electric connection (V/-/Hz) | 1N+PE AC 230V 50Hz |

|                     |      |
|---------------------|------|
| Width (mm)          | 1555 |
| Depth (mm)          | 1390 |
| Height (mm)         | 1285 |
| Gas power (Mj/hr)   | -    |
| Electric power (kW) | 0.4  |

**boiling** | braising | pasteurising | **tilting** | mixing | **cooling** | frying | underpressure | vacuum cooking | cutting | washing | drying



|   |  |  |                    |
|---|--|--|--------------------|
| E | Potenza assorbita<br>Electric power            | Elektrische Leistung<br>Puissance Électrique   | .40 (kW)           |
| E | Collegamento Elettrico<br>Electric connection  | Elektrische Verbindung<br>Connexion Électrique | 220-240V 1N ~ 50Hz |
| V | Allacciamneto Vapore<br>Steam connection       | Dampfanschluss<br>Connexion vapeur             | 1"                 |
| S | Scarico Condensa<br>Condensate drain           | Kondenswasserablauf<br>Sortie du condenseur    | 3/4"               |
| A | Allacciamento Acqua Calda<br>Hot water inlet   | Warmwasseranschluss<br>Raccordement eau chaude | 3/4"               |
| B | Allacciamento Acqua Fredda<br>Cold water inlet | Katlwasseranschluss<br>Raccordement eau froide | 3/4"               |

boiling | braising | pasteurising | tilting | mixing | cooling | frying | underpressure | vacuum cooking | cutting | washing | drying