

# GENIUS<sup>MT</sup> Backmaster Edition 8 X BN64

---

Combi steamer, electric, right hinged



## HIGHLIGHTS

### MT TECHNOLOGY:

- 7" MultiTouch Display
- Climatic<sup>®</sup>MT
- Last<sup>®</sup>20
- Quick Set
- Multi Cooking
- Quick Mode
- Electrical door opening
- Adapted graphical user interface with baking focus
- Integrated baking, snack and breakfast programmes
- Switch to cooking mode at any time
- autoclean<sup>®</sup> MT (optional)

# GENIUS MT Backmaster Edition 8 x BN64

## DIMENSIONS

Width x depth x height in mm: 925 x 805 x 1120

Weight: 167 kg

Weight with packaging: 191 kg

Number levels: 8 x BN64 Distance

between levels: 85 mm

## ELECTRICAL SUPPLY

Voltage: 400V/ 3 N AC

Connection load: 17,20 kW

Rated current: 24,8 Amp

Protection: 3 x 25 Amp

Res. current circuit breaker, frequency converter 1PH: 10Amp

Recommended cross section: 4 qmm

Noise emission: < 70 dB (A)

Article number:

EL1113003-2A

## SAFETY CLEARANCE

Rear: min. 50mm

Right: min. 50mm

Left: min. 50mm

Minimum distance to heat sources: min. 50mm

## LOADING CAPACITY

GN 1/1: 10+1

EN / BN\*: 8

Plates max Ø32 cm: 18

\*Serial-hanging racks GN, EN/BN hanging racks available with accessories

## WATER CONNECTION

Water supply/dim: 2 x G 3/4" A

Flow pressure: 2 - 6 bar ( 200 - 600 kPa )

## DRAIN SYSTEM

Version: permanent connection (rec.) or funnel waste trap

Type: DN50 (min. Ø internal: 46mm)

Slope for waste water pipe: min. 3%

## WATER QUALITY

General requirement: drinking water

Total hardness: ≤ 3°dh / 70 - 125 ppm / 7-13° TH / 5-9 °e

pH-value: 7,0 - 8,5

Cl (chloride): max. 60 mg/l

Cl<sub>2</sub> (free chlorine): max. 0.2 mg/l

SO<sub>4</sub><sup>2-</sup> (sulphate): max. 150 mg/l

Fe (iron): max 0.1 mg/l

Temperature: max. 40°C

Electrical conductivity: min. 20 µ S/cm

Water pressure: 4 bar (2 - 6 bar)

## WATER CONSUMPTION

Soft water: 16 l/h (at 4 bar)

Hard water: 55 l/h (at 4 bar)

## HEAT EMISSION

latent: 6,12 MJ/h, sensitive: 4,284 MJ/h

## STANDARDS

Safety: VDE - UL-CSA, SVGW, WRAS

Protection: IPX 5

Built according to: DIN 18866-2



# GENIUS MT Backmaster Edition 8 x BN64

## STANDARD FEATURES

7" Multitouch-Display  
2 operating modes from 30°C to 300°C  
Humidification programmable in seconds and millilitres  
Automatic idle period, depending on set humidity amount  
Automatic door, electrical door opening  
Fan speed in 5 levels - each one can be pulsed  
Autoreverse fan wheel for even results  
400 programme spaces with 20 steps each  
Favourites marking and filtering  
Start and end time setting up to 24h  
SPS®: Steam protection system  
e/2 - energy saving mode  
Manual steaming  
Active-Temp

Eloma live steam system  
Multi-Eco-System  
Integrated spray hose  
HACCP/LMHV data logging and display  
Switch back to full cooking & baking mode at any time

### MT-Technology:

Multi Baking  
Last\*20  
Quick Mode  
Quick Set  
Steptronic®  
Climatic®MT

## OPTIONS

Left hinged  
External sous-vide probe  
External core temperature probe  
Ocean Edition

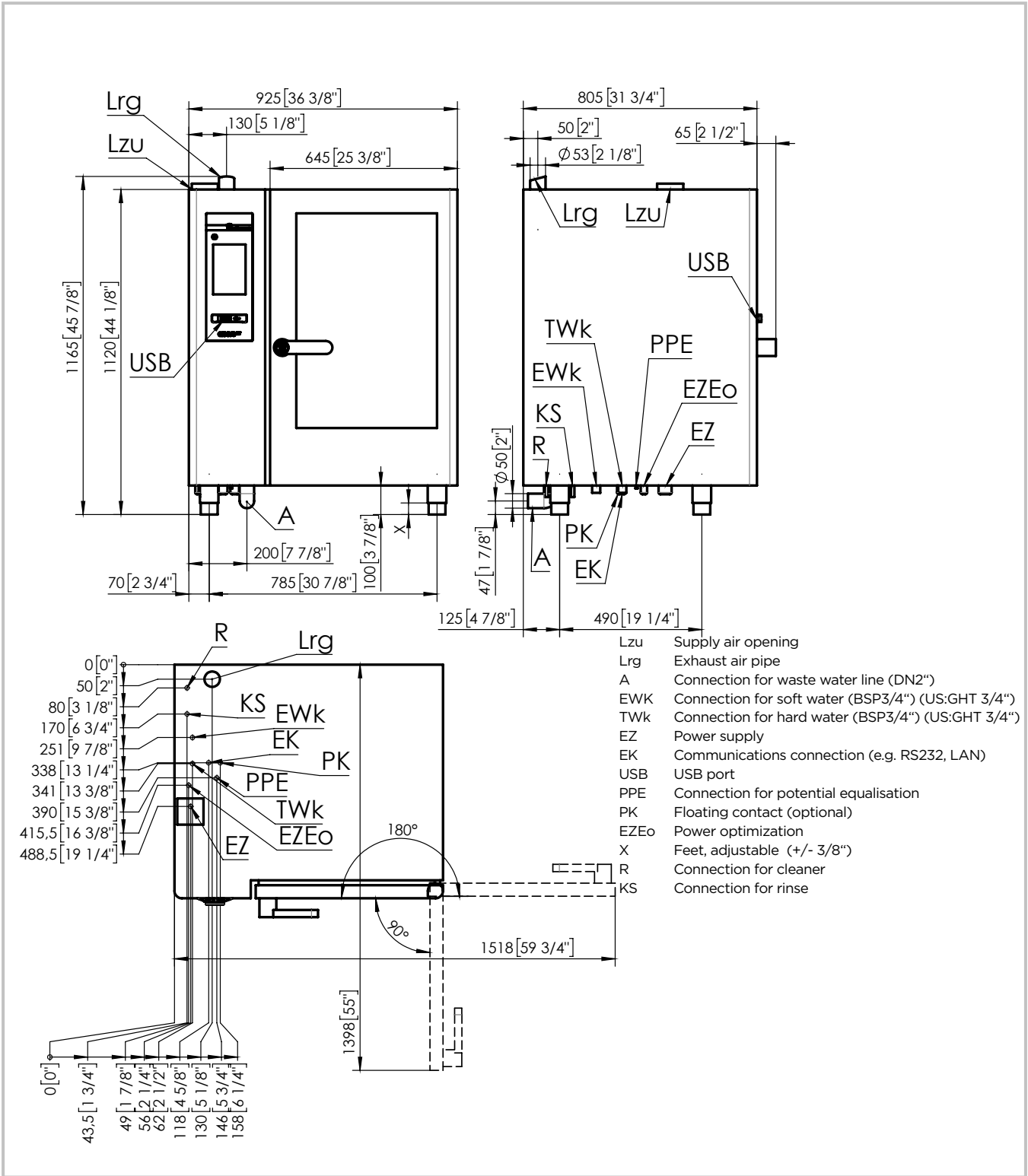
Special voltages  
Connection energy optimisation  
WLAN and LAN-connection  
autoclean® MT

## ACCESSORIES (EXTRACT)

Multi-Eco condensationhood  
Combimix-Kits, support stands and condensation hoods for mix-stations  
Vario-hanging racks for GN 1/1 and BN 46

GN/BN hanging rack  
SmokeFit smoking device  
Trays, grids and pans  
ProConnect data management software





Eloma GmbH | Otto-Hahn-Str. 10 | 82216 Maisach/Germany  
 Phone: +49 8141 395-0 | Fax: +49 8141 395-130  
 Mail: sales@eloma.com  
 eloma.com



**CUSTOMER SERVICE**  
 P. +49 8141 395-188  
 F. +49 8141 395-130  
 sales@eloma.com