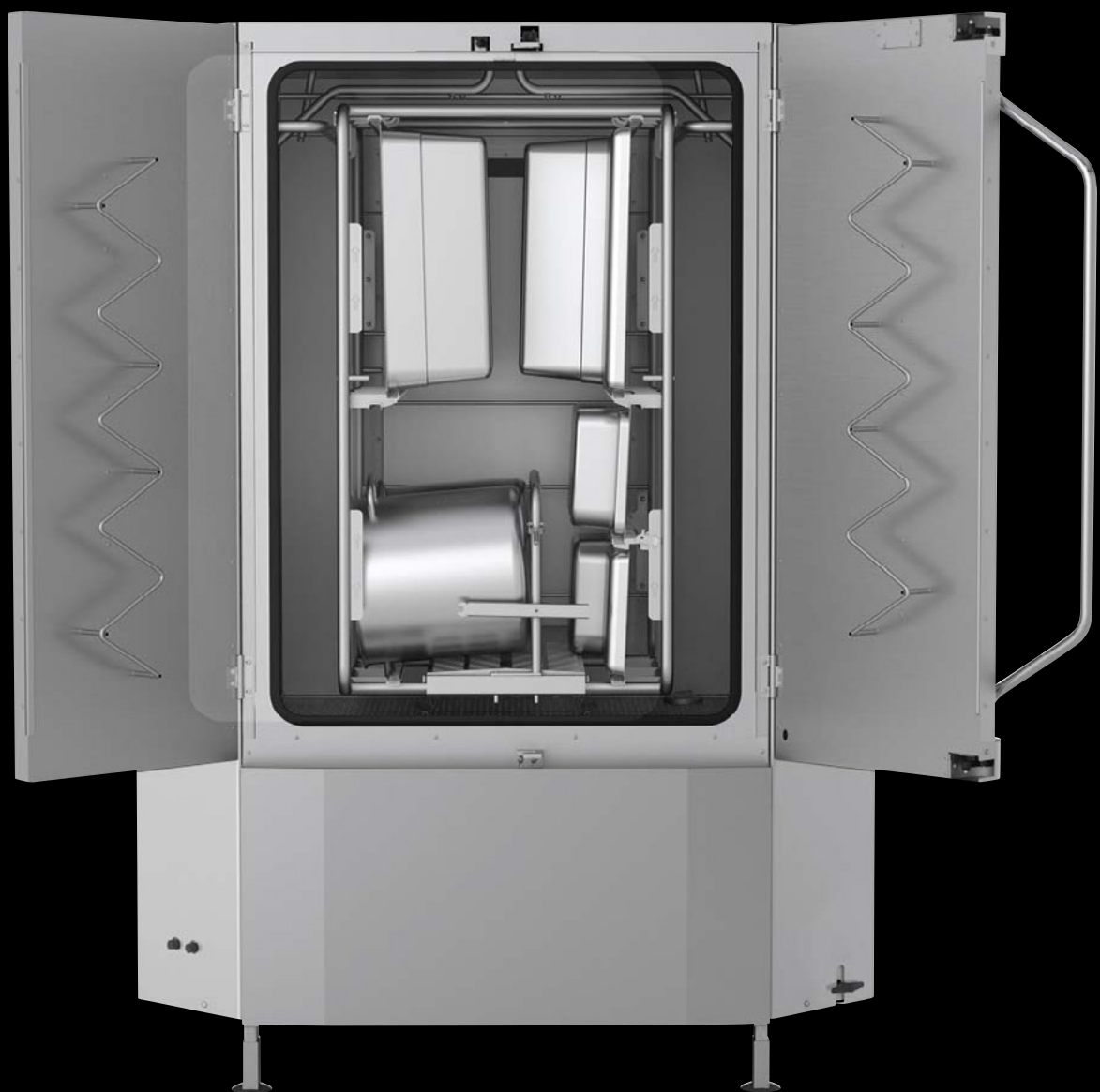


# GRANULE MAXI<sup>®</sup>

CUSTOMISED FOR HIGH CAPACITY.





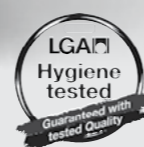
# PURE POWER.

In a professional kitchen, you can't spend too much time washing up. Granule pot washing machines from GRANULDISK of Sweden gives you access to innovative, powerful technology to streamline pot washing. More emphasis on food – fewer resources for getting your pots clean.

Traditional pot washing has always been a laborious, resource-intensive task in any production kitchen. GRANULDISK technology has turned things on their head and revolutionised washing-up areas by making hard work easy. Our PowerGranules® blast the pots clean mechanically using high-pressure water and a small amount of chemical. Even stubborn food debris is removed with ease, and this technology saves energy, time and money while also reducing environmental impact and improving the work environment.

Manual pot washing requires soaking, scrubbing and sinks full of water. The GRANULDISK concept represents something completely different. Our pot washing machines take care of the entire job, thus eliminating the need for pre-washing. We refer to this concept quite simply as "No Pre-Washing". In just a few minutes, your pots are both visibly and hygienically clean thanks to a power similar to the efficiency of thousands of people washing by hand. The overall result is a more productive washing-up area and less of the things which cost money and impact upon the environment.





**Intertek**  
Conforms to Std. NSF 3

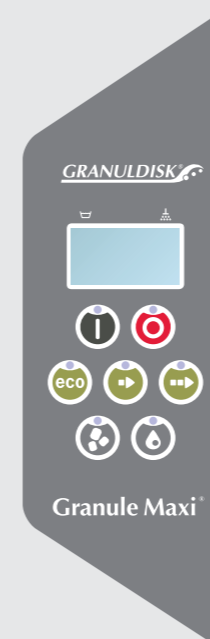
## GRANULE MAXI®

In medium-sized and large kitchens, the handling of pots is extremely important to the workflow. Granule Maxi® is a high-capacity machine which makes sure that pots are quickly ready to use again. In order to maximise this benefit, Granule Maxi® can be customised by using the right combination of accessories.

The powerful Granule Maxi® has been developed for large scale potwashing. GRANULDISK's customers appreciate it for its efficiency and ability to save money by using less chemical, water and electricity. In an hour, Granule Maxi® is able to wash up to 192 GN 1/1 or 96 GN2/1, making it the perfect solution for kitchens making up to 3 000 meals a day.

Granule Maxi® is available in three different versions with different capacities in order to meet various needs and requirements – find out more on page 6.

For kitchens with even greater potwashing requirements, we recommend installing two of these machines or a combination of machine types, depending on the items to be washed.



## CONTROL PANEL.

User-friendliness is always a key focus for our control panels and the display, symbols and messages are easy to understand, making it easy to select the correct wash programme. Choose with or without PowerGranules and programme lengths Eco, Short or Normal. When the machine is in use the red indicator is lit and the display changes into a countdown timer, showing the remaining time in large digits.

Wash and rinse tank temperatures are shown in the display at all times and with a simple command, you can view HACCP

data for up to 200 of the previous wash programmes.

Integrated function GD Memo™ uses the control panel display for automatic reminders regarding change of PowerGranules®, wash water and when to book a service appointment.



*The coloured indicators make it easy to see whether the machine is working (red) or ready for loading or unloading of pots (green).*

## HACCP LOG.

The operating system in GRANULDISK pot washers logs all HACCP-essential information for up to 200 wash cycles through the built-in HACCP Log feature.

The data - containing valuable information such as wash/rinse water temperatures, programme lengths, interruptions and alerts - is easy to follow up on and helps you ensure that your pot wash operation always complies with HACCP protocol.

The data is easily accessed and viewed directly via the display in the control panel or downloaded to a USB stick through a built in USB port. The flexible .txt file format can be stored as is, or easily be imported to various computer programmes, to for example add it to your HACCP reports.



## ECOEXCHANGER®

The optional add-on EcoExchanger offers steam reduction and heat recovery built into one. Thanks to clever design it only builds 230 mm on top, keeping the total install height low. The efficient steam reduction feature captures the vapor from the wash cycle and reduces the amount of steam released into the room after completed programme.

The heat recovery feature recycles heat energy from the vapor and uses it to heat up incoming rinse water, resulting in up to 33% lower energy consumption for heating the rinse tank. For more information, please see separate product sheet.



## POWERGRANULES®

PowerGranules® are specially designed for use with GRANULDISK products.

PowerGranules® are made from a plastic which has been tested and approved for contact with food. The unique mix of sizes and the composition of the material gives an exceptional removal rate.

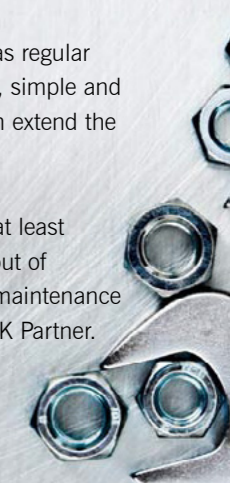


10 liter | Art no. 22633    20 liter | Art no. 22634

## MAINTENANCE.

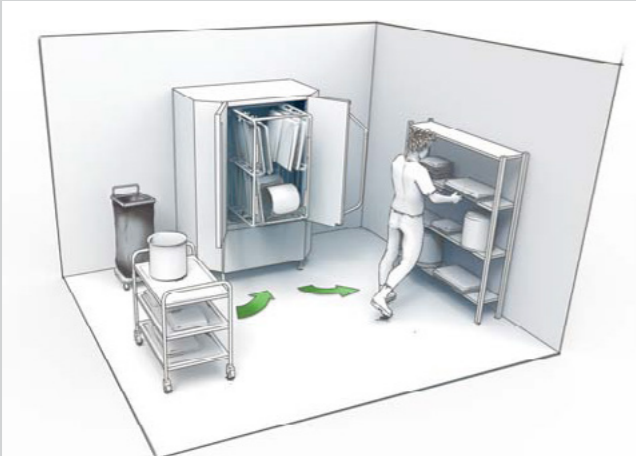
Daily cleaning is every bit as important as regular servicing to ensure optimal wash results, simple and worry-free operations and in the long run extend the service life of your machine.

We guarantee spare part availability for at least 10 years after a model has been taken out of production. Make sure any servicing or maintenance is carried out by a Certified GRANULDISK Partner.



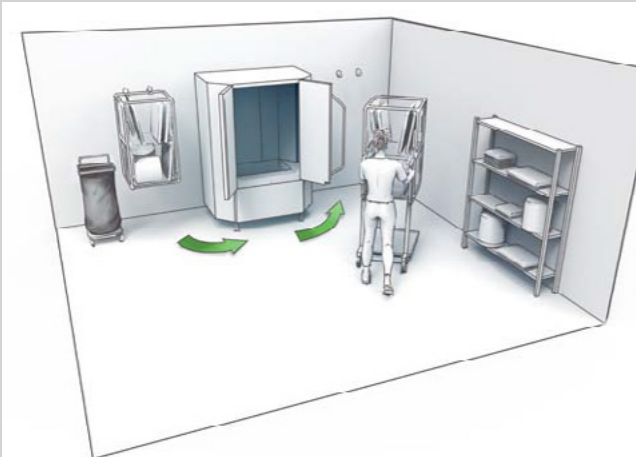
MACHINE SYSTEM.

The Granule Maxi cassette is able to accommodate 8 GN1/1 or 4 GN2/1, up to 200 mm deep. Each cassette comes with a divider, which makes it easy to wash GN1/2 and other small containers. Pots are placed in the lower part of the cassette. The machine can be customised using accessories. If additional accessories are purchased, installation of accessory hangers is recommended for storage when they are not in use. This means they'll always be close at hand.



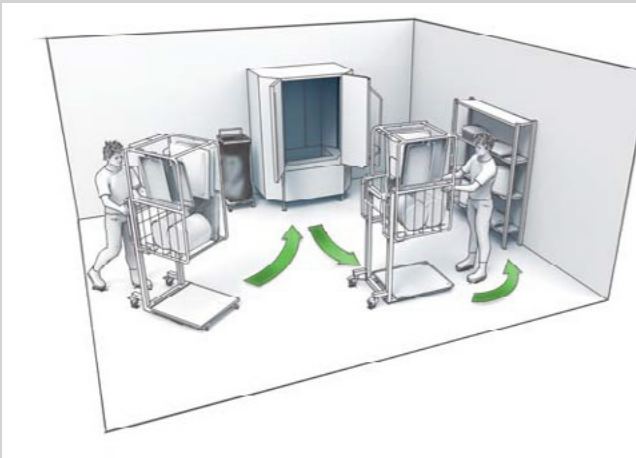
GRANULE MAXI® COMPACT EDITION.

Takes up just 1.5 m² of space providing high capacity in a small area. This machine comes equipped with a sliding multi-cassette. The pots are loaded directly into the multi-cassette, which always remains inside the machine.



GRANULE MAXI® FLOW EDITION.

A machine system which enhances efficiency while also providing a clear barrier between dirty and clean pots. The machine comes equipped with two multi-cassettes and one cassette trolley. The multi-cassette is hooked onto the cassette trolley and can easily be hung on the wall or manoeuvred in and out of the machine. You can then wash the pots in one cassette while filling or emptying another. The cassette trolley can be fitted with drip trays to prevent any splashes of water or food debris ending up on the floor.



GRANULE MAXI® FREEFLOW EDITION.

Designed for full flexibility in washing-up areas. A machine system which enhances efficiency while also providing a clear barrier between dirty and clean pots. The machine comes equipped with two multi-cassettes and two cassette trolleys which can be moved around easily in the washing-up area. Reduces the number of work elements as the cassette can easily be loaded with dirty pots at the bench before then being transported to the machine on the trolley. When the wash programme is complete, the clean pots can be unloaded straight to the storage area. Both cassette trolleys are fitted with drip trays to prevent any splashes of water or food debris ending up on the floor.

MORE THAN 3000 MEALS PER DAY?

Find out on our website about our solutions for professional kitchens serving more than 3000 meals per day, or contact us for a personal consultation.

TECHNICAL DATA.

Design	Compact Edition with sliding cassette. Flow Edition with 1 trolley and 2 cassettes. FreeFlow Edition with 2 trolleys and 2 cassettes
Outer dimensions	2 039 x 1 452 x 1 089 mm (H x W x D)
Loading volume	450 litres (B 540 x H 1 060 x D 680 mm)
Weight	666 kg (filled machine) 471 kg (empty machine)
Wash tank volume	165 litres
Granule volume	16 litres
Wash water temperature	65 °C
Rinse water temperature	85 °C
Wash programmes with Granules	ECO: 2 min, 30 sec Short: 4 min, 40 sec*** Normal: 6 min, 40 sec***
Wash programmes without Granules	ECO: 2 min, 30 sec Short: 3 min, 40 sec*** Normal: 5 min, 40 sec***
Max capacity per hour	FreeFlow: 192 GN1/1 or similar in other pots. Flow: 144 GN1/1 or similar in other pots. Compact: 136 GN1/1 or similar in other pots.
Normal capacity per hour	160 GN1/1 or similar in other pots
Capacity per programme	8 GN1/1 or up to 16 GN1/2 or 4 GN2/1, up to 200 mm depth or similar in other pots.
Rinse water volume	7 litres/ECO programme 14 litres/Short and Normal programmes To achieve 3 600 HUE in accordance with NSF/ANSI 3, 14 litres is necessary.
Available voltage**	3~ 400 V/50 or 60 Hz + PE 3~ 415 V/50 Hz + PE 3~ 230 V/50 or 60 Hz + PE
Fuses, hot water connection	40A (400V, 415V), 63A (230V)
Fuses, cold water connection	50A (400V, 415V)
Fuses, steam heated machine, 0,3-2,0 bar	20A (400V), 25A (230V)
Max output, hot water connection	21 kW
Max output, cold water connection	29 kW
Max output, steam heated machine 0,3-2,0 bar	5 kW
Wash pump motor	2 x 2,2 kW
Rinse pump motor	0,37 kW
Wash tank element*	16 kW, (24 kW cold water connection)
Rinse tank element*	16 kW, (24 kW cold water connection)
Enclosure rating	IPX5
Sound pressure level	<70 dB(A)
Hot water	½" (DN15), 55–65 °C, 3–10 °dH Note: Reverse osmosis water and distilled water must not be used.
Water pressure/flow (hot water)	1–6 bar, 25 litres per minute
Cold water	½" (DN15), 3–10 °dH
Water pressure/flow (cold water)	3–6 bar, 15 litres per minute
Recommended ventilation capacity	700 m³/h (without steam reduction) 200 m³/h (with steam reduction) Note: Steam reduction is factory-fitted for Granule Maxi®. For ECO programmes the factory-fitted steam reduction is not activated.
Drainage pipe	Pipe ø 32 mm
Drain	Capacity requirement 50 l/min The machine must not be placed directly over a drain.
Detergent and drying agent are required	Detergent and drying agent; 230 VAC signal is available from a separate box. Max load total 0.5 A.

\* Does not operate simultaneously.

\*\* For specific data on machines supplied, please see the rating plate on the machine.

\*\*\* 1 min longer with steam reduction.

Granule Maxi® is supplied with a power cable 2 metres long (without a plug) for connection to an approved main switch. The main switch is not included in the delivery.



HIGH CAPACITY.

Washes 8 GN1/1 or 4 GN2/1 or 16 GN1/2 per was programme. Up to 192 GN1/1 or 96 GN2/1 per hour (containers up to 200 mm deep).



TIME-SAVING.

Clean pots and pans from 2.5 minutes - no pre-washing needed.



WATER-SAVING.

The ECO programme saves up to 4 200 litres per day and up to 1 260 000 litres per year compared with manual washing-up in sinks (1500 meals per day, 300 days per year).



SAVING ON CHEMICALS.

Saves up to 8.4 litres per day and up to 2 500 litres per year compared with manual washing-up in sinks (1500 meals per day, 300 days per year).



FOOD SAFETY.

All programmes of the Granule Maxi® pot and pan washer comply with the hygiene guidelines of the DIN 10512 standard.

# ACCESSORIES.

Granule Maxi comes in 3 different editions with customised standard accessory packages. Choose the edition that suits your needs best and further enhance it by adding one or more additional accessories.

For loading options and full range of available accessories, please visit [www.granuldisk.com](http://www.granuldisk.com)

[www.granuldisk.com/granule-maxi-accessories](http://www.granuldisk.com/granule-maxi-accessories)



## STANDARD DELIVERY GRANULE MAXI® COMPACT EDITION.

Standard delivery of Granule Maxi® Compact Edition includes one Granule Maxi pot washer and below accessories.



### GRANULE MAXI® COMPACT EDITION.

Machine with one sliding multicassette. Including USB port for HACCP Log, GD Memo™, steam reduction unit and type AB air gap according to EN 1717.

#### Standard delivery:

- 1 pc 14149 sliding multicassette for loading 8 x GN 1/1 GN containers or 4 x GN 2/1
- 1 pc 19313 divider for small GN containers, sizes 1/9-2/3.
- 1 pc 21838 Scraper
- 2 pcs Granule collectors 8 litres
- 16 litres PowerGranules® (in the machine)



### MULTICASSETTE.

ART NO. 14149

For 8 GN 1/1 containers or 4 GN 2/1 or equivalent in other washware.



### DIVIDER FOR GN CONTAINERS, SIZES GN 1/9-2/3.

ART NO. 19313

To allow GN 1/2, 1/3, 1/6, 1/9 and 2/3. Capacity: 4 x GN1/2 or 8 GN 1/4. Other possibility is 2 x GN 2/3 and 2 x GN 1/3 or 4 x GN 1/6 or 6 x GN 1/9.



### 2 X GRANULE COLLECTOR.

ART NO. 11918



### SCRAPER.

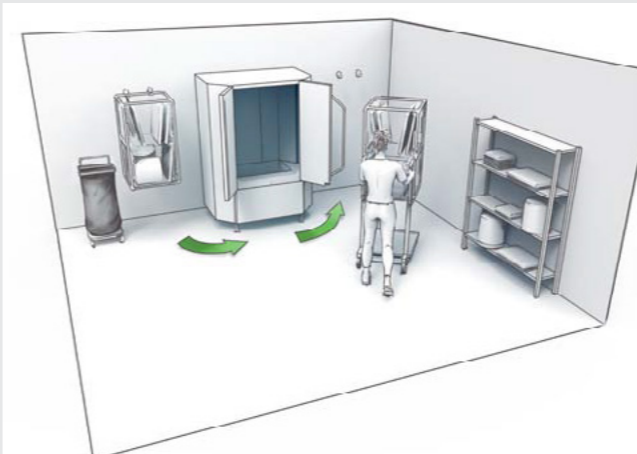
ART NO. 21838

For pre scraping.



## STANDARD DELIVERY GRANULE MAXI® FLOW EDITION.

Standard delivery of Granule Maxi® Flow Edition includes one Granule Maxi pot washer and the below accessories.



### GRANULE MAXI® FLOW EDITION.

Machine for trolley system with two loose multicassettes to be hooked onto the wall. Including USB port for HACCP Log, GD Memo™, steam reduction unit and type AB air gap according to EN 1717.

#### Standard delivery:

- 2 pcs 14469 Multicassettes for loading 8 x GN 1/1 GN containers or 4 x GN 2/1
- 2 pcs 19313 Divider for small GN containers, sizes 1/9-2/3.
- 1 pc 21838 Scraper
- 1 pc 19138 Cassette trolley
- 2 sets of 10694 Cassette hooks with wall protection
- 2 pcs Granule collectors 8 litres
- 16 litres PowerGranules® (in the machine)



### 2 X MULTICASSETTES FOR FLOW/FREEFLOW.

ART NO. 14469

For 8 GN 1/1 containers or 4 GN 2/1 or equivalent in other washware.



### CASSETTE TROLLEY.

ART NO. 19138

For operation of Multi-cassette.



### 2 X CASSETTE HOOK SETS WITH WALL PROTECTION FOR GRANULE MAXI FLOW.

ART NO. 10694

1 set contains 2 hooks. To be able to wall-mount the cassette.



### 2 X DIVIDERS FOR GN CONTAINERS, SIZES GN 1/9-2/3.

ART NO. 19313

To allow GN 1/2, 1/3, 1/6, 1/9 and 2/3. Capacity: 4 x GN1/2 or 8 GN 1/4. Other possibility is 2 x GN 2/3 and 2 x GN 1/3 or 4 x GN 1/6 or 6 x GN 1/9.



### 2 X GRANULE COLLECTOR.

ART NO. 11918



### SCRAPER.

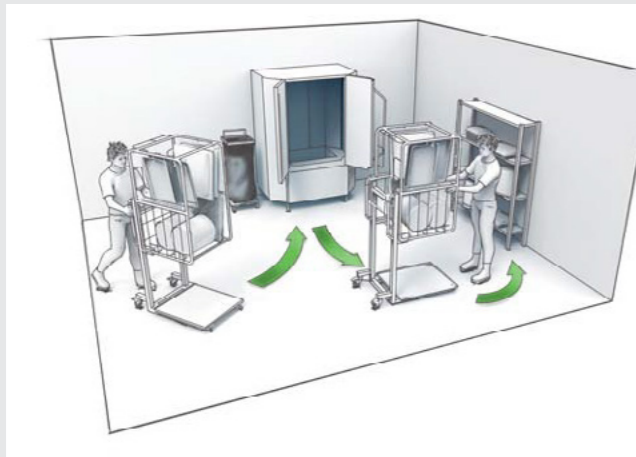
ART NO. 21838

For pre scraping.



## STANDARD DELIVERY GRANULE MAXI® FREEFLOW EDITION.

Standard delivery of Granule Maxi® FreeFlow Edition includes one Granule Maxi pot washer and the below accessories.



### GRANULE MAXI® FREEFLOW EDITION.

Machine for trolley system with two loose multicassettes with flexible loading onto two trolleys. Including USB port for HACCP Log, GD Memo™, steam reduction unit and type AB air gap according to EN 1717.

#### Standard delivery:

- 2 pcs 14469 Multicassettes for loading 8 x GN 1/1 containers or 4 x GN2/1
- 2 pcs 19313 Divider for GN containers, 1/9-2/3.
- 1 pc 21838 Scraper
- 2 pcs 19138 Cassette trolleys
- 2 pcs 14565 Drip trays for trolley
- 2 pcs Granule collectors 8 litres
- 16 litres PowerGranules® (in the machine)



### 2 X MULTICASSETTES FOR FLOW/FREEFLOW.

**ART NO. 14469**

For 8 GN 1/1 containers or 4 GN 2/1 or equivalent in other washware.



### 2 X CASSETTE TROLLEY.

**ART NO. 19138**

For operation of Multi-cassette.



### 2 X DRIP TRAY FOR CASSETTE TROLLEY.

**ART NO. 14565**

Avoids food and water drop on the floor.



### 2 X DIVIDERS FOR GN CONTAINERS, SIZES GN 1/9-2/3.

**ART NO. 19313**

To allow GN 1/2, 1/3, 1/6, 1/9 and 2/3. Capacity: 4 x GN1/2 or 8 GN 1/4. Other possibility is 2 x GN 2/3 and 2 x GN 1/3 or 4 x GN 1/6 or 6 x GN 1/9.



### 2 X GRANULE COLLECTOR.

**ART NO. 11918**



### SCRAPER.

**ART NO. 21838**

For pre scraping.

## ADDITIONAL ACCESSORIES.

Each of the accessories included in standard delivery are also available for single order, as well as an additional range of other useful accessories. What are your wash needs?



### HOLDER FOR SMALLER BOWLS AND POTS.

**ART NO. 10004**

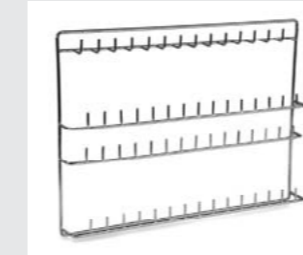
Capacity: up to 3-5 pots or bowls.



### HOLDER FOR SMALL GN PANS.

**ART NO. 10948**

Capacity: up to 6 GN1/3 or 12 GN1/6 or 18 GN1/9.



### POT- AND SAUCEPAN-HOLDER.

**ART NO. 10972**

Capacity: 3-5 pots/saucepans with handles or ears to be hung on to the hooks.



### HOLDER FOR STORAGE OF ACCESSORIES.

**ART NO. 10595**

Holder for storage of accessories when they are not in use. This holder is hung on either side of the machine.



### INSERT FOR BAKING TRAYS.

**ART NO. 22017**

Capacity: 8 x 600x400 mm baking trays, max 20 mm edge.



### LID- AND TRAY HOLDER.

**ART NO. 10950**

Capacity: up to 9 pcs of GN 1/1 sized flat trays and lids.



### NET BASKET WITH LID.

**ART NO. 21477**

For ladles, whisks up to 500 mm length.



For the full range of accessories, loading options and video demos please visit [www.granuldisk.com/granule-maxi-accessories](http://www.granuldisk.com/granule-maxi-accessories)

SUITED FOR MARINE INSTALLATION

## MARINE OPTION.

Selecting the Marine Option customises a Granule Maxi® Compact Edition for use off shore, for example on board ships and oil rigs. While at sea, the twin level sensors fitted in the wash tank help to prevent repeated alarms which may interrupt the workflow. The "marine feet" are secured to the floor to prevent the machine tipping over. This machine is also readily accessible for servicing as no servicing is carried out from the rear. Also, when the doors are open they are locked into position. Marine Option provides a stable, reliable and safe potwashing solution for marine installations.

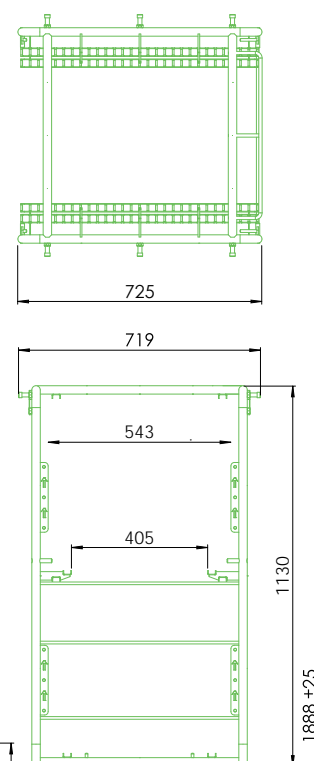
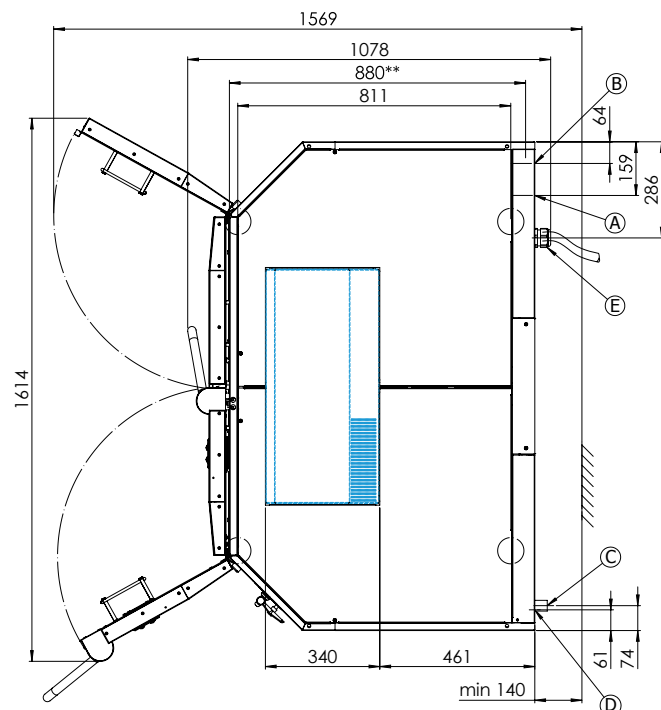
[www.granuldisk.com/marine-edition](http://www.granuldisk.com/marine-edition)

## INSTALLATION.

- A** = Hot water 55–65 °C (cold water optional),  
3–10 °dH, 5–18 °f.  
1–6 bar, 25 L/min, max 6 bar static.  
G ½" BSP female, flexible hose min inner ø 9 mm.
- B** = Cold water, 3–10 °dH, 5–18 °f.  
3–6 bar, 15 L/min, max 6 bar static.  
G ½" BSP female, flexible hose min inner ø 9 mm.
- C** = Drain ø 32 mm. Horizontal pipe, capacity min 50 L/min.
- D** = Detergent/drying agent connection, signal 230V AC.
- E** = Electrical connection (technical data page 7  
or in user manual).

**Other:**

Ventilation capacity: With steam reduction 200 m<sup>3</sup>/h.  
Without steam reduction 700 m<sup>3</sup>/h.



- EcoExchanger unit (optional add-on, combined heat recovery and steam reduction)

*NB: The EcoExchanger unit must be connected to cold water feed at all times. (B)*

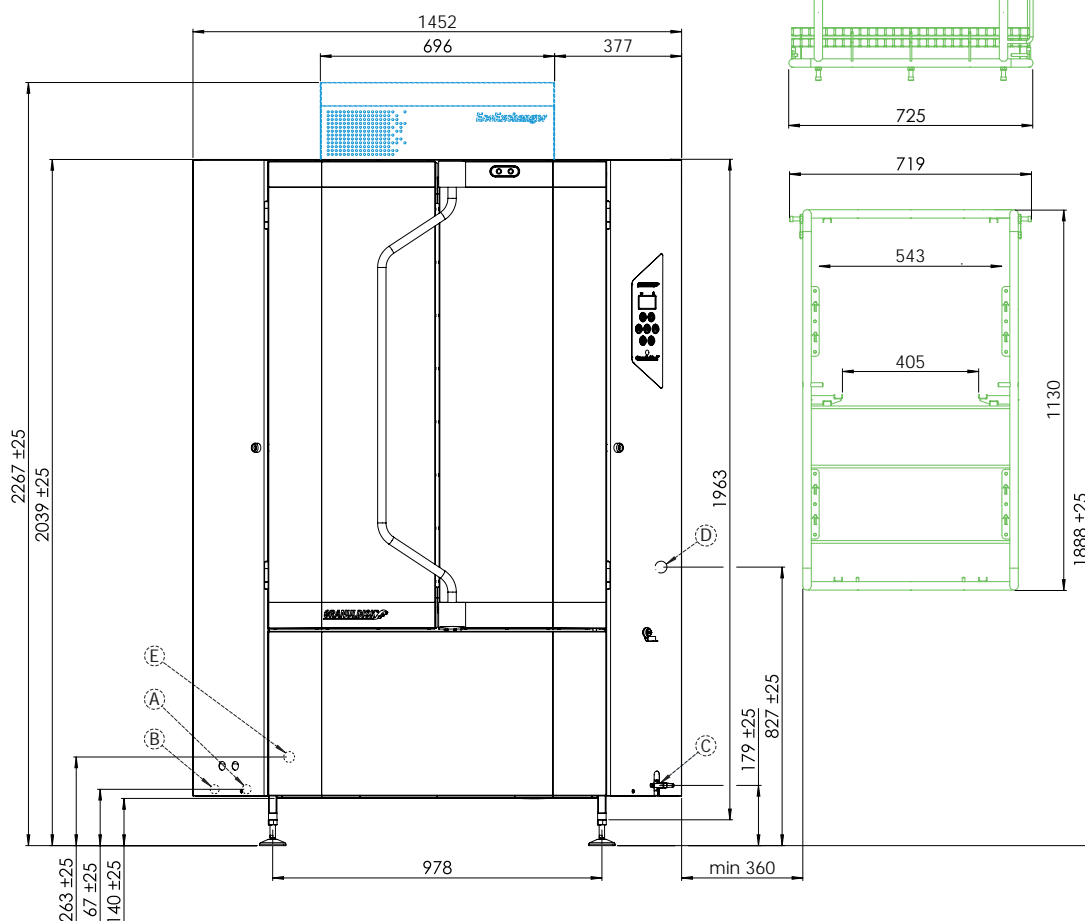
*EcoExchanger is only available for cold water option machines (max power 50A, 29 kW) but on site, the machine can be connected to either hot or cold water feed. (A)*

*Delivered separately, to be fitted after installation of pot washer.*

- Granule Maxi Compact Edition  
*1 sliding cassette inside of pot washer.*

Granule Maxi Flow Edition  
1 trolley, 2 loose cassettes. Cassettes are hung from wall-mount on each side of the pot washer (minium distance; see drawing). Cassette is moved into pot washer with help from trolley.

Granule Maxi FreeFlow Edition  
2 trolleys, 2 loose cassettes. One cassette  
and trolley set on each side of the  
pot washer.



© GRANULDISK 2015.09 EN-Export We reserve the right to correct any printing errors. We reserve the right to change designs, specifications and equipment

**GRANULDISK®**

**FSM** (FOOD SERVICE MACHINERY PTY. LTD.)  
**HEAD OFFICE:** UNIT E6, 63-85 TURNER STREET,  
 PORT MELBOURNE, VIC. 3207 AUSTRALIA  
 T: +61 3 8645 2555 F: +61 3 8645 2565  
 E: [sales@fsm-pl.com.au](mailto:sales@fsm-pl.com.au) W: [www.fsm-pl.com.au](http://www.fsm-pl.com.au)

**SYDNEY OFFICE:**  
UNIT 15, 7-9 PROGRESS CIRCUIT,  
PRESTONS, NSW 2170 AUSTRALIA  
T: +61 2 9608 8620 F: +61 2 9607 9370  
E: [sales@fsm-pl.com.au](mailto:sales@fsm-pl.com.au) W: [www.fsm-pl.com.au](http://www.fsm-pl.com.au)

**QUEENSLAND:**  
T: 0400 099 992  
E: [sales@fsm-pl.com.au](mailto:sales@fsm-pl.com.au)  
W: [www.fsm-pl.com.au](http://www.fsm-pl.com.au)