

Glass Door Display

GDM-72F-HC~TSL01

 Upright Retail Merchandiser Freezer, 3 Full Glass Swing Doors



Dimensions		Build		Technical	
External Width (mm)	1985	Door Description	3 Full Glass Swing Doors	Temperature Holding	-23°C
External Depth (mm)	759	Exterior Construction	Black powder coated Stainless Steel front, matching Aluminium sides and rear	Refrigerant	R290
External Height (mm)	1998	Interior Construction	White coated aluminium, stainless steel base	Voltage / Frequency / Phase	220-240V/50Hz/1
Exclusions	Depth does not include 42 mm for door handle or 13 mm for rear access panel.	Air Intake Position	Front	Amps	6.8
Net Volume (Litres)	1359	Ventilation Position	Rear	60Hz model Amps	6.6
Gross Volume (Litres)	2039	Clearance Required	26 mm rear, zero sides	Wattage	1564
Display Area (m ²)	1.99	Cord Length (Meters)	2.74	60Hz model Wattage	1518
Supplied Shelves	12	Internal Lighting	LED	Temperature Class	L1
Shelf Size (L x D mm)	613 x 569	Standard w/ Locks	Not Standard. Options available.	Operating Statement	Tested at 25°C, 60% RH, per 'Refrigerators with a Direct Sales Function' for perishable food merchandising.
Internal Net Height (mm)	1300			Testing Standard	EN 23953
Unpackaged Weight (kg)	271			EEC	D
Packaged Weight (kg)	282			EEL	39.6
Packaged Dimensions (W x D x H mm)	2121 x 902 x 2134			kWh/24hr	20.0
Supplied Supports	Leg Levellers (Castors supplied separate)			kWh/Annum	7316
				Defrost Type	Auto



Specifications subject to change without notice.
 Technical data above related to energy use based on testing of 50Hz or Dual Frequency models
 Chart dimensions rounded up to the next whole millimeter (inches rounded up to the 1/8")

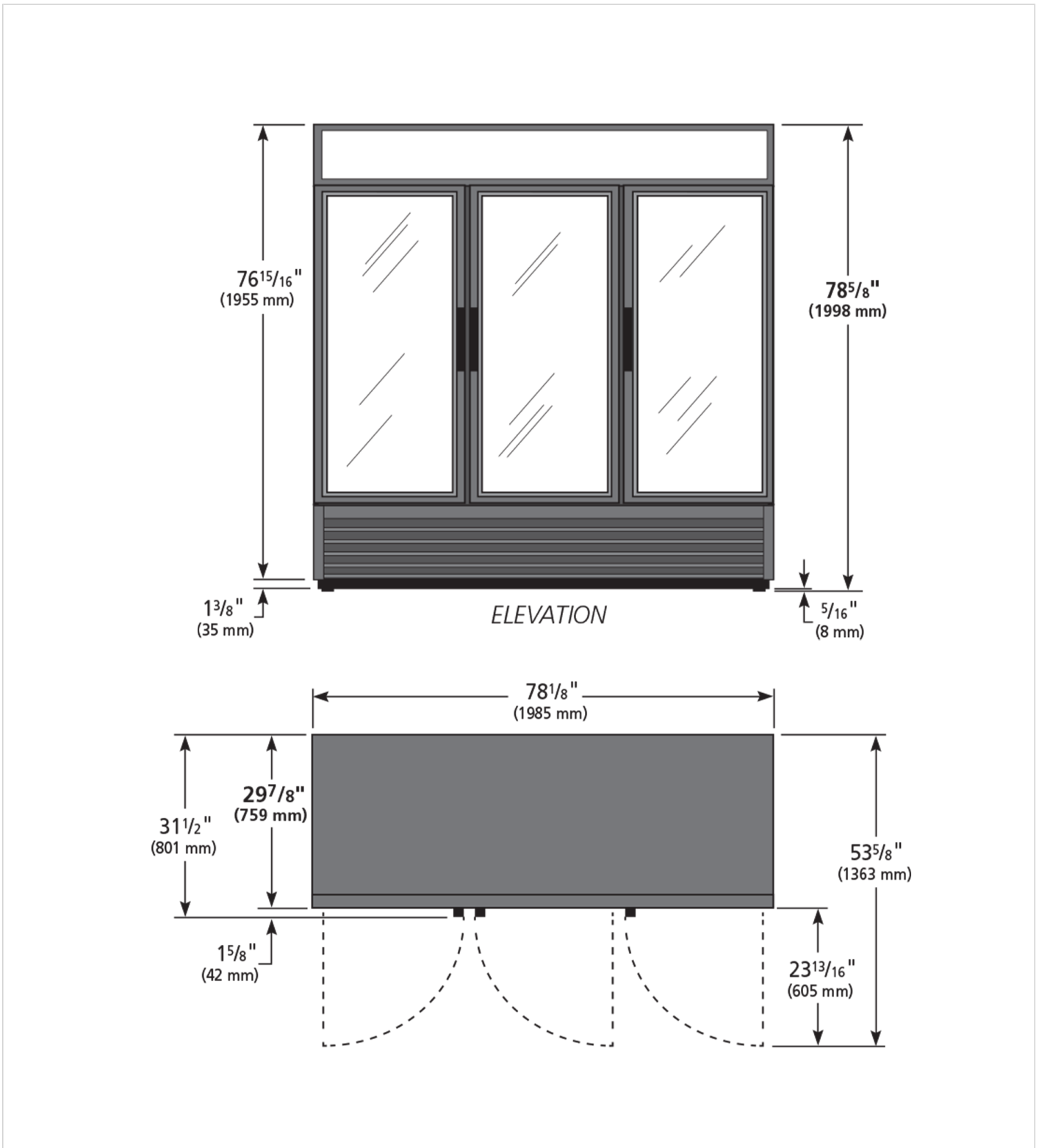
UK & Ireland [0800 783 2049](tel:08007832049)
 EMEA [+41 61 563 07 05](tel:+41615630705)
 Australia [+61 2 9619 9999](tel:+61296199999)

TFIUK@truemfg.com
TrueCHCustomerService@truemfg.com
TrueRefAus@truemfg.com



GDM-72F-HC~TSL01

Upright Retail Merchandiser Freezer, 3 Full Glass Swing Doors



Specifications subject to change without notice.
Technical data above related to energy use based on testing of 50Hz or Dual Frequency models
Chart dimensions rounded up to the next whole millimeter (inches rounded up to the 1/8")

UK & Ireland 0800 783 2049
EMEA +41 61 563 07 05
Australia +61 2 9619 9999

TFIUK@truemfg.com
TrueCHCustomerService@truemfg.com
TrueRefAus@truemfg.com

