

GC202 1P STD

20 x 2/1GN roll in blast chiller/freezer

functions

Blast chilling cycles +3°C HARD/SOFT

Blast freezing cycles -18°C HARD/SOFT

Max. chilling capacity (+3°C) / kg **300**

Max. freezing capacity (-18°C) / kg **200**

Climatic class **4**

technical data

Width (mm) **1700**

Depth (mm) **1530**

Height (mm) **2300**

Weight (kg) **650**

N° trays 2/1GN (535x650) or 600x800 **20**

N° trays trolleys 2/1GN **1**

Electric connection (V/~ /Hz) **420/3/50
+ N**

Electric power (W) **2775**

Max. absorbed current (A) **5.47**

Compressor (HP) **15**

Refrigerant type (gas) **R452A**

Internal width (mm) **900**

Internal depth (mm) **1080**

Internal height (mm) **2020**

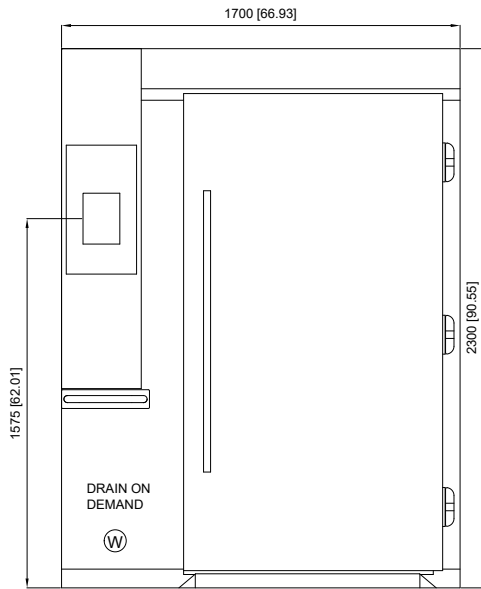
Gross weight (kg) **780**



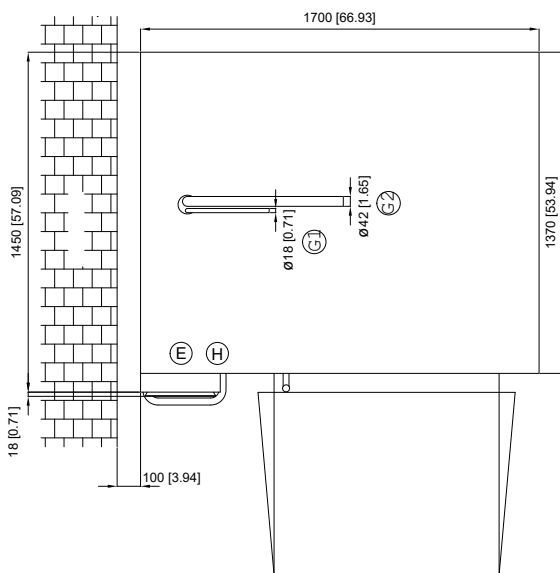
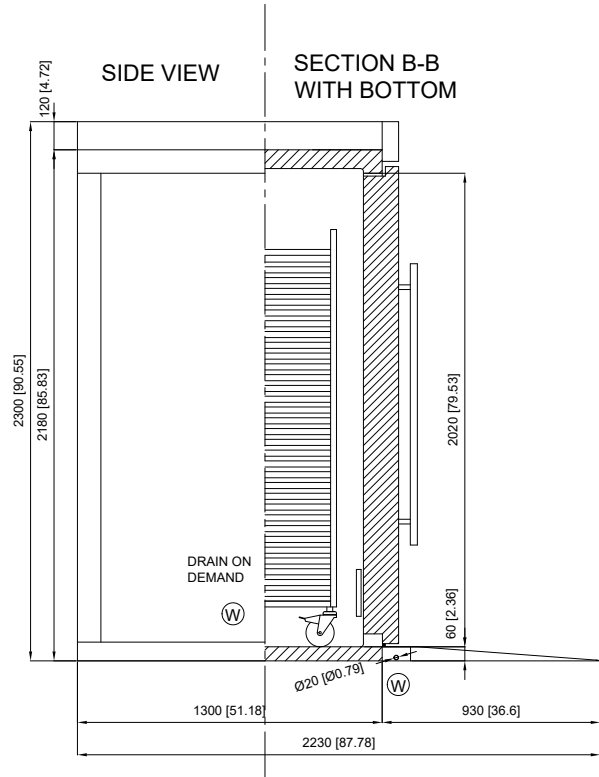
main features

- Full Touch 7-inch Display
- Finely “Scotch Brite” brushed exterior
- 80 mm insulation thickness in CFC and HCFC-free PU, density 42 kg/m³
- 2mm stainless steel floor
- Large storage capacity cell featuring rounded corners for easy cleaning
- Ergonomic handles
- Front electric panel that can be fully inspected
- Drain
- Air distribution with new evaporator deflector
- OPTIONAL electronic expansion valve
- PLUS versions ventilation regulation by inverter
- Connectivity 4.0
- Load capacity pursuant to EN17032
- OPTIONAL weather sealed and soundproofed condensing units

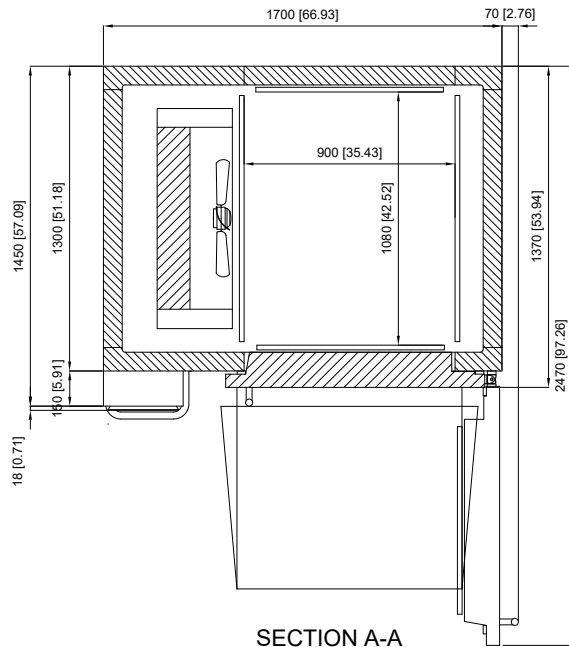
202 (C40) "H"



FRONT VIEW



TOP VIEW



SECTION A-A

- ① INGRESSO REFRIGERANTE
REFRIGERANT INLET
- ② USCITA REFRIGERANTE
REFRIGERANT OUTLET
- Ⓔ CONNESSIONE ELETTRICA
ELECTRICAL CONNECTION
- Ⓜ CONNESSIONE SCARICO
DRAIN CONNECTION
- Ⓜ CONNESSIONE H2O
WATER CONNECTION

DIMENSIONI mm
DIMENSIONS [in]