



PP 97 PLUS



CE

Ricer / Foodmill Whisks



44 / 220 lbs 10 / 25 gal.



Ref. PP02

TECHNICAL DATA

OUTPUT MAX	650 W
SPEED	100 to 500 R.P.M.
VOLTAGE	115 or 230 V
TOTAL LENGTH	920 mm / 36.2"
AP 97 RICER TOOL LENGTH	450 mm / 11.7"
FM 97 WHISK TOOL LENGTH	690 mm / 27.2"
DIAMETER	170 mm / 6.7"
AP 97 RICER TOOL WEIGHT	1.9 kg / 4.2 lbs
FM 97 WHISK TOOL WEIGHT	1.5 kg / 3.3 lbs
PP97 + ACTUAL WEIGHT - SHIPPING WEIGHT	4.9 kg / 10.7 lbs - 5.9 kg / 13 lbs
SHAFTS	DETACHABLE

ADVANTAGES

- Exclusive to Dynamic
- Powerful and heavy duty
- Detachable ricer tool for easy maintenance and cleaning and convenient storage
- Stainless steel perforated grid and blade that can be easily dismantled for cleaning
- Variable speed as standard
- Average throughput: 10 kg/min
- Possibility to adapt a FM 97 Whisk tool delivered with a handle



MAINTENANCE

Clean the tools by passing them under the faucet.

The grid and blade can be easily dismantled. Clean them under running water.

Wash the motor block with a sponge or with a slightly damp cloth.

Never clean this machine with a water jet spray.

USE

Ricer: It allows you to mix a creamy purée with entire potatoes directly in pots, avoiding decanting. Also used for many purées and vegetable creams: carrots, tomato sauce, beet, salad dressings, split peas, cauliflowers.

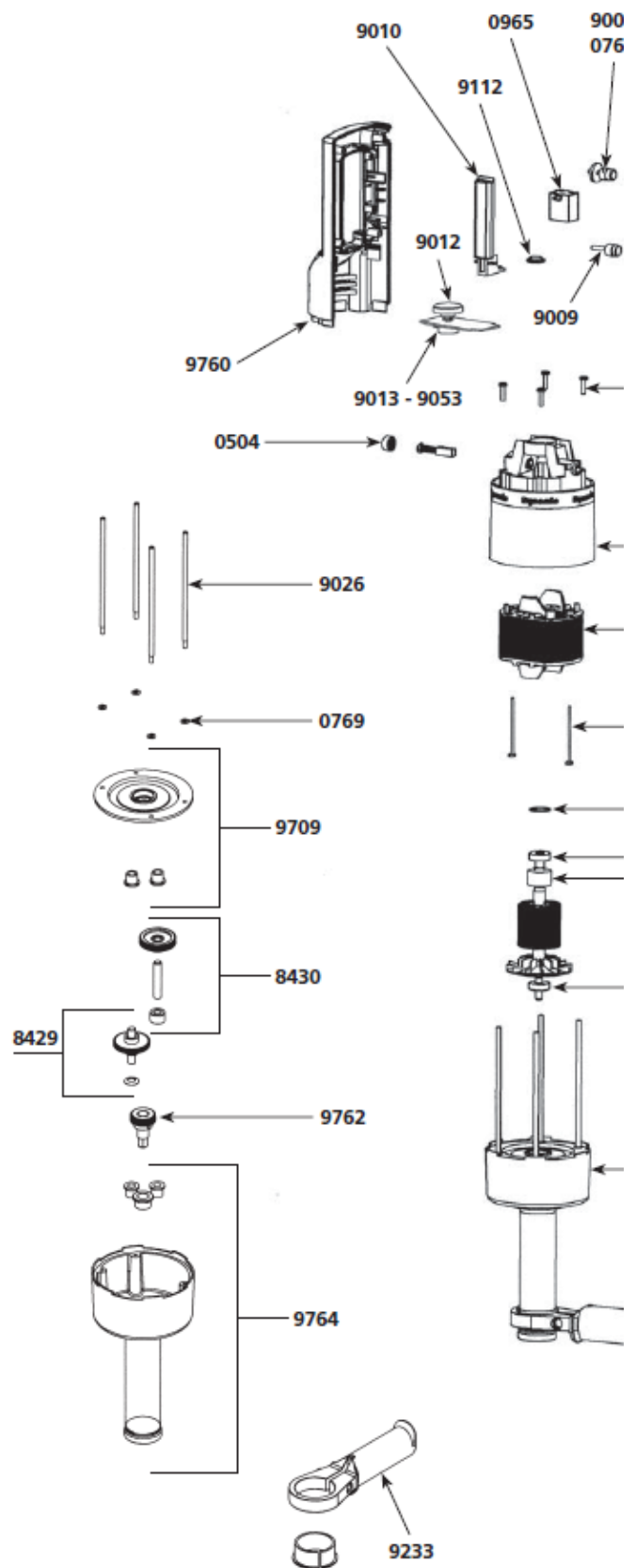
Whisk: Excellent tool for homogenization of dehydrated food: flour, ice, soup, sauce, instant mashed potato, milk powder, etc. It mixes preparations without reducing content and without risk of lumps.



TECHNICAL SHEET

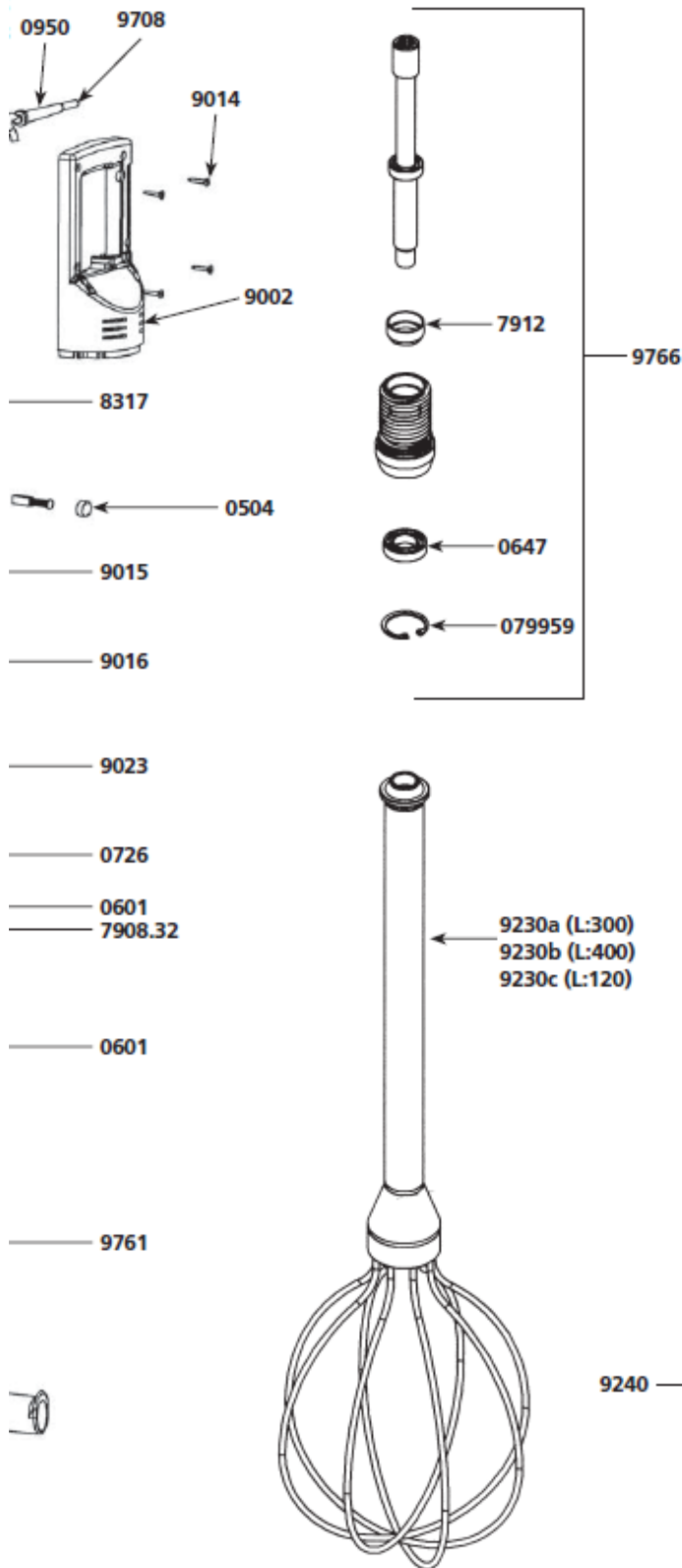
PP 97 PLUS MOTOR BLOCK

Parts list	Code
Carbon brushes	0504
Ball bearing	0601
Rubber washer	0726
Safety button return spring	0768
Strain relief 230 V	0950
Strain relief 115 V	0950.1
Switch	0965
Capacitor (115 V)	0972
Capacitor + filter	0972.1
Dynamic label	1027
Identification plate 230 V	109913
Identification plate 115 V	109914
Rotor 115 V	7908.31
Rotor 230 V	7908.32
Fan	7933
Brace screws	8317
Upper half handle	9002
Security cap	9005
Handle cap	9009
Control lever	9010
Variable speed knob	9012
Variable speed control board 230 V	9013
Handle screw	9014
Top housing	9015
Stator 230 V	9016
Stator screws 230 V (2)	9023
Stator 115 V	9038
Carbon brush wires (230 V)	9043
Variable speed control board 115 V	9053
Knob (115 V)	9112
Carbon brush wires (115 V)	9143
Power cord 230 V	9708
Power cord 115 V	9708.1
Lower half handle 230 V (with label)	9760
Lower half handle 115 V (with label)	9760.1
Lower motor housing	9761
Complete handle w/ power cord 230 V	9765
Complete handle w/power cord 115 V	9765.1



PP97 plus equipped lower carter

Parts list	Code
M4 Washer	0769
Double gear with washer	8429
Middle gear axle	8430
Braces	9026
Handle support	9233
Plate w/ 2 seals	9709
Exit shaft w/ gear	9762
Aluminium carter, foot and seals	9764



PP97 plus / FM97 Whisk tool

Parts list

Code

D15 Bearing	0647
Rubber ring	079959
Ball bearing	7912
Mono whisk L : 300	9230a
Mono whisk L : 400	9230b
Mono whisk L : 120	9230c
Equipped male casing (shaft, bearing seal, ball bearing, rubber ring)	9766

AP 97 Ricer tool

Parts list

Code

Waterproof seal	0609
Rubber washing	0830
Fan	0835
Friction washer	0836
Ricer grid	0842
Bearing seal	7912
Antifriction seal	8422
Lower bolt	8423
Equipped male casing, bearing seal, tube and complete lever assembly	9240
Exit shaft	9241

