

COMMERCIAL WORKBENCH FRIDGES



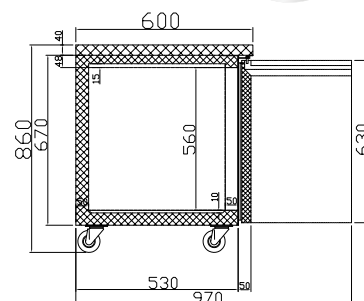
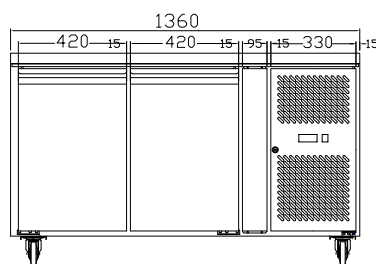
- CFC Free refrigerant and foam
- Stainless steel interior & exterior
- Electronic thermostat and digital LED temperature display
- Auto defrosting and auto

- evaporation of condensation water
- Fan-forced evaporator cooling
- Magnetic gaskets can be replaced without any tools

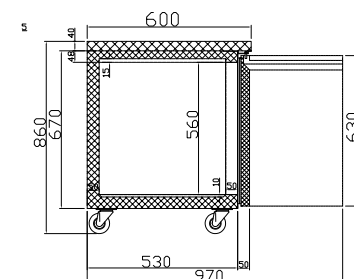
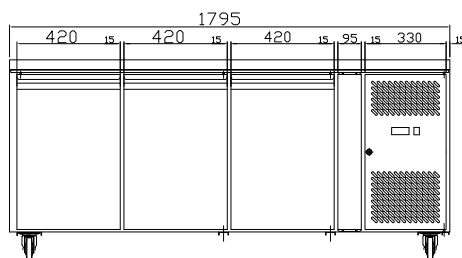
- Bottom with round edges for easy cleaning
- One level of shelving plus floor



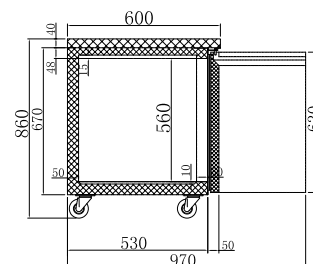
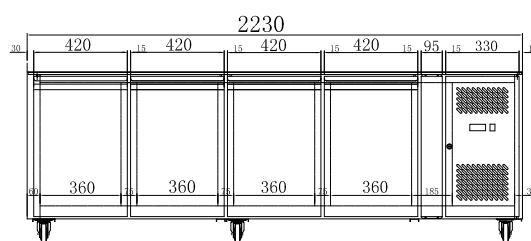
FE2100TN



FE3100TN



FE4100TN



Optional Splashback Top

Code	Litre	Doors	Dimensions (WxDxH mm)	Weight (kg)	Temperature Range	Ambient/ RH%	Voltage	Power (W/A)
Workbench fridges								
FE2100TN	260	2	1360x600x860	88	-2 to +8	43/40	240	350/10
FE3100TN	386	3	1795x600x860	125	-2 to +8	43/40	240	350/10
FE4100TN	511	4	2230x600x860	143	-2 to +8	43/40	240	350/10

Optional Splashback Top

FE2100-WBB

FE3100-WBB

FE4100-WBB

Allow 100mm clearance for installation, all vents must be left clear.
Prices and specifications are subject to change without notice. Pictures are for illustrative purpose and final product may differ