


# TPP-AT-93D-6-HC

 Pizza Prep Table, 12x 1/3 Top Pans, 6 Drawers



Dimensions		Build		Technical	
External Width (mm)	2369	Number of Drawers	6	Temperature Holding	0.5 : 5°C
External Depth (mm)	854	Exterior Construction	Stainless steel front, top & lids, aluminium sides and rear	Refrigerant	R290
External Height (mm)	1133	Interior Construction	Clear coated aluminium, stainless steel base	Voltage / Frequency / Phase	220-240V/50Hz/1
Exclusions	Depth does not include 26 mm for rear bumpers and 42mm for cutting board overhang.	Air Intake Position	Front	Amps	3.3
Gross Volume (Litres)	875	Ventilation Position	Front	60Hz model Amps	3.6
Top Pans Supplied (max depth mm)	12x 1/3 GN (150)	Clearance Required	Zero back and sides	Wattage	759
Per Drawer Capacity (max depth mm)	1x 2/1 GN (200)	Cord Length (Meters)	3.35	60Hz model Wattage	828
Unpackaged Weight (kg)	262	Standard w/ Locks	Not standard (SPEC3 option)	Defrost Type	Auto
Packaged Weight (kg)	273				
Packaged Dimensions (W x D x H mm)	2540 x 966 x 1245				
Cutting Board (L x D mm)	2369 x 496				
Supplied Supports	ø 127 mm castors (146 mm height)				




Specifications subject to change without notice.  
 Technical data above related to energy use based on testing of 50Hz or Dual Frequency models  
 Chart dimensions rounded up to the next whole millimeter (inches rounded up to the 1/8")

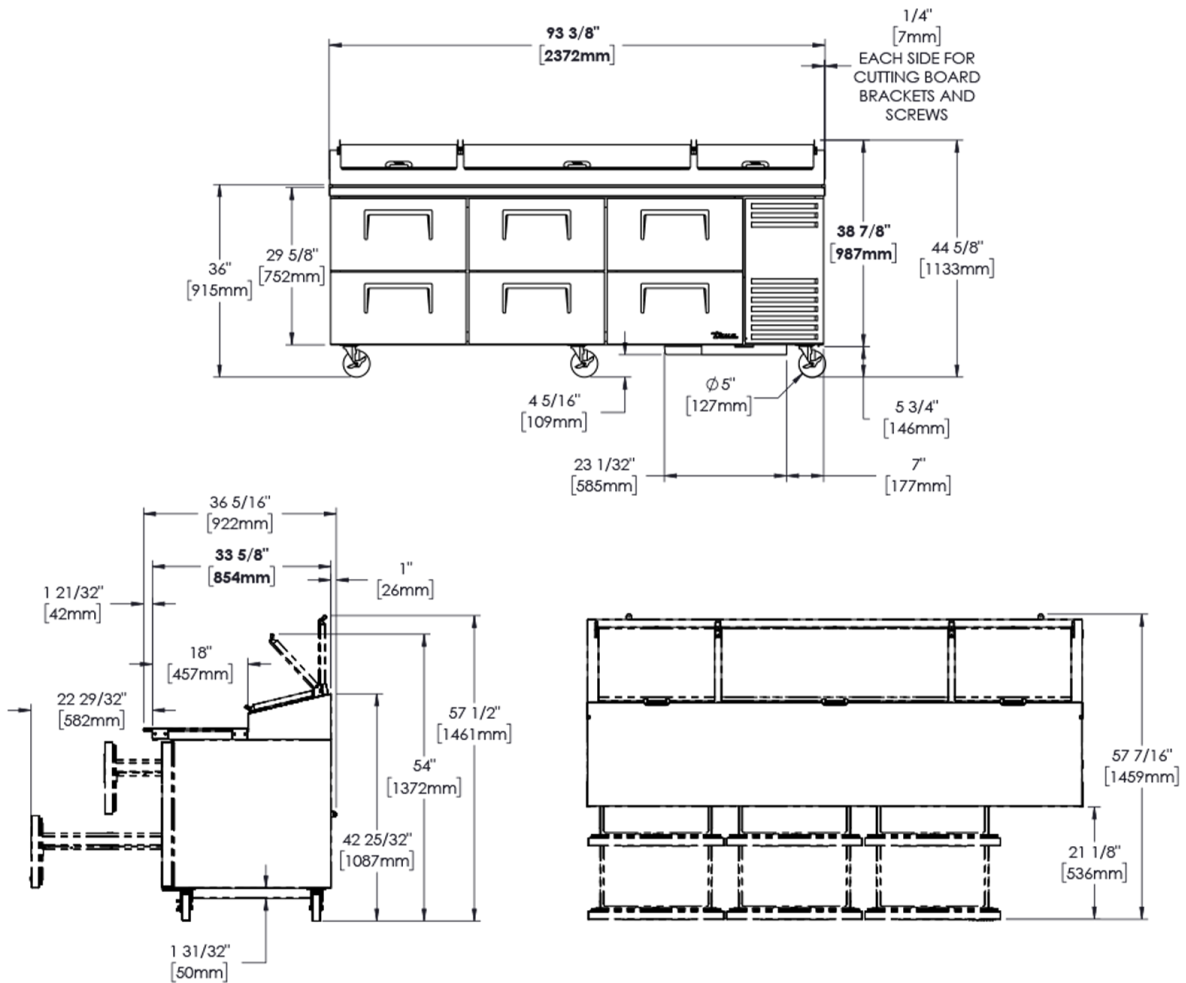
UK & Ireland [0800 783 2049](tel:08007832049)  
 EMEA [+41 61 563 07 05](tel:+41615630705)  
 Australia [+61 2 9619 9999](tel:+61296199999)

[TFIUK@truemfg.com](mailto:TFIUK@truemfg.com)  
[TrueCHCustomerService@truemfg.com](mailto:TrueCHCustomerService@truemfg.com)  
[TrueRefAus@truemfg.com](mailto:TrueRefAus@truemfg.com)



# TPP-AT-93D-6-HC

 Pizza Prep Table, 12x 1/3 Top Pans, 6 Drawers



Specifications subject to change without notice.  
 Technical data above related to energy use based on testing of 50Hz or Dual Frequency models  
 Chart dimensions rounded up to the next whole millimeter (inches rounded up to the 1/8")

UK & Ireland **0800 783 2049**  
 EMEA **+41 61 563 07 05**  
 Australia **+61 2 9619 9999**

[TFIUK@truemfg.com](mailto:TFIUK@truemfg.com)  
[TrueCHCustomerService@truemfg.com](mailto:TrueCHCustomerService@truemfg.com)  
[TrueRefAus@truemfg.com](mailto:TrueRefAus@truemfg.com)

