

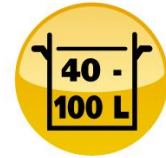


**MDH 2000**

Ref. MX003



WWW.DYNAMICMIXERS.COM



10 / 25 gal.

MASTER SERIES

## TECHNICAL DATA

<b>OUTPUT MAX</b>	500 W
<b>SPEED</b>	3,000 to 9,500 R.P.M.
<b>VOLTAGE</b>	115 V or 230 V
<b>TOTAL LENGTH</b>	720 mm / 28.3"
<b>MIXER TOOL LENGTH</b>	410 mm / 16"
<b>DIAMETER</b>	122 mm / 4.8"
<b>ACTUAL WEIGHT - SHIPPING WEIGHT</b>	3.7 kg / 8.1 lbs - 4.5 kg / 9.9 lbs
<b>SHAFT</b>	DETACHABLE

## ADVANTAGES

- Powerful, sturdy
- Detachable mixer tool: easy cleaning and maintenance
- Micro switch automatic locking system
- Continuous function auto run button allows to mix continuously or pulse
- Ergonomic design
- Higher ventilation point
- Variable speed as standard
- Indicator light: for your safety the light indicates that the unit is plugged in and ready for operation
- Stainless steel mixer tube, guard and whisks for easy cleaning and perfect hygiene
- Titanium-plated blade easily dismantled without any special tool

## MAINTENANCE

Clean the mixer tool by passing it under the faucet.

Wash the motor block with a sponge or with a slightly damp cloth.

**Never clean this machine with a water jet spray.**

## USE

It allows to mix, directly in the pots, many applications including: fish soups, panades (thick soup reduced to puree), salad dressings, pancakes paste, gravies, sauces, mayonnaise, puree of vegetables lightly pulverized, porridge, raw carrots puree, fruits cream ...

**Capacity:** 40 to 100 L / 10 to 25 gal.

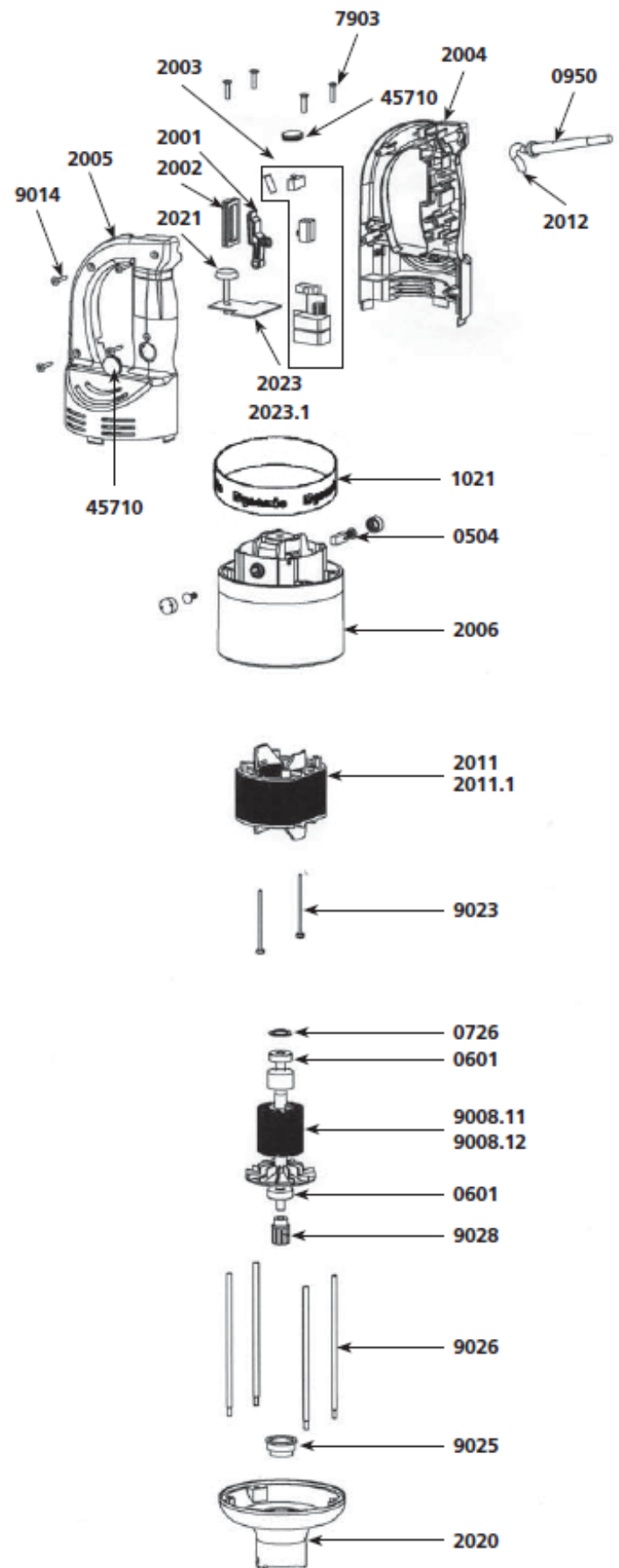


# TECHNICAL SHEET

## MDH 2000 / BM 2000 MOTOR BLOCK

### Motor

Parts list	Code
Carbon brushes (2)	0504
Ball bearing	0601
Squeezing washer	0726
Safety button return spring	0768
Strain relief 230 V	0950
Strain relief 115 V	0950.1
C.E.M. Filter	0999.20
Warning label	1017
Dynamic label	1021
ID label 230 V	1075
ID label 115 V	1076
Micro switch	1237
Power on indicator light 230 V	1241
Power on indicator light 115 V	1241.1
Control lever	2001
Control lever protector	2002
Circuit board 230 V (4 switches + capacitor)	2003
Circuit board 115 V (4 switches + capacitor)	2003.1
Half handle (button side)	2004
Half handle (label side)	2005
Motor housing brush holder	2006
Speed control plug	2008
Complete handle 230 V	2010
Complete handle 115 V	2010.1
Stator 230 V	2011
Stator 115 V	2011.1
Power cord 230 V > 2002	2012
Power cord 115 V > 2002	2012.1
Power cord (UK) > 2002	2012.2
Power cord (Australian) > 2002	2012.3
Lower aluminum housing	2020
Speed variator knob	2021
Complete handle 230 V with variator (from N°040132)	2022
Complete handle 115 V with variator (from N°040132)	2022.1
Speed variator 230 V	2023
Speed Variator 115 V	2023.1
Brace screws (4)	7903
Fan	7933
Rotor 115 V	9008.11
Rotor 230 V	9008.12
Power cord 230 V < 2002	9011
Handle screws (4)	9014
Field brace screws (2)	9023
Motor ball bearing sleeve	9025
Brace (4)	9026
Coupler for armature	9028
Power cord 115 V < 2002	9040
Carbon brush wires 230 V	9043
Power cord (Australian) < 2002	9066
Carbon brush wires 115 V	9143
Safety cover	45710



## MF 90/2000 & MFAP 90/2000 mixer tool

Parts list	Code
Ball bearing	0601
Waterproof seal	0607
Bearing holder + seal	1186
Emulsifying blade	7910
Lower bearing assembly	7916
Cutter blade w/ screw	7917
Lower bearing screws (3)	7950
Shaft, lower bearing & cutter assembly	9004
Shaft	9031
Coupling casing + pin	9051
Tube assembly	9901
Lower bearing screws (3)	9902
M 90 Complete Mixer tool (see machine catalogue)	AC002

## M500 mixer tool

Parts list	Code
Shaft, lower bearing & cutter assembly	9004L
Shaft	9031L
Tube assembly	9901L

