



PMDH 250 XL



Ref. MX016

TECHNICAL DATA

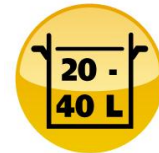
OUTPUT MAX	350 W
SPEED	0 to 9,500 R.P.M.
VOLTAGE	115 or 230 V
TOTAL LENGTH	640 mm / 25.2"
MIXER TOOL LENGTH	400 mm / 15.7"
DIAMETER	97 mm / 3.8"
ACTUAL WEIGHT - SHIPPING WEIGHT	2.6 kg / 5.7 lbs - 3.8 kg / 8.4 lbs
SHAFT	DETACHABLE

MAINTENANCE

Clean the outside of the tube and the blade protector by passing it under the faucet.

Wash the motor block with a sponge or with a slightly damp cloth.

Never clean this machine with water jet spray.



5 / 10 gal.

ADVANTAGES

- Ideal for medium size applications
- Sturdy, handy
- Detachable tool for easy cleaning and maintenance
- **NEW** Longer mixer tool (400 mm) allowing to work in deeper pots.
- Safety button
- Variable speed as standard
- Double insulation
- Stainless steel mixer tube and guard for easy cleaning and perfect hygiene
- Titanium-plated blade easily dismantled without any special tool



USE

It allows to mix, directly in the pots, many applications including: fish soups, panades (thick soup reduced to puree), salad dressings, pancakes paste, gravies, sauces, mayonnaise, puree of vegetables lightly pulverized, porridge, raw carrots puree, fruits cream ...

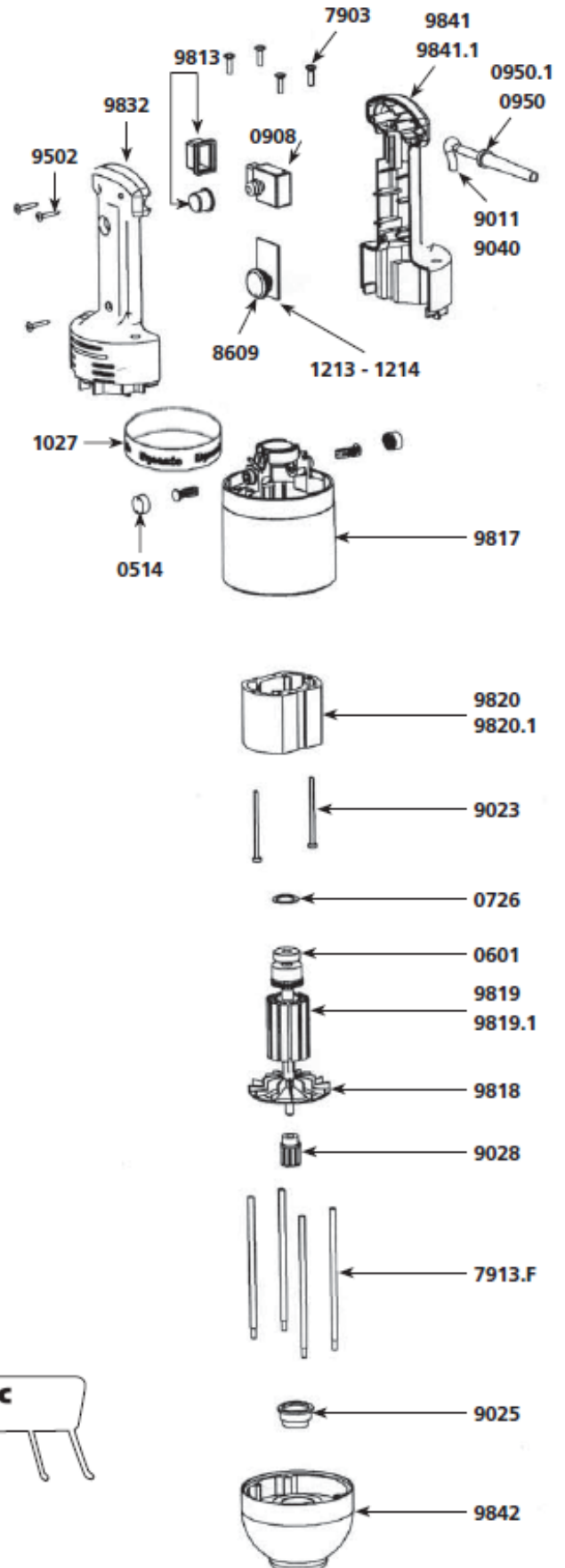
Capacity: 20 to 40 L / 5 to 10 gal.



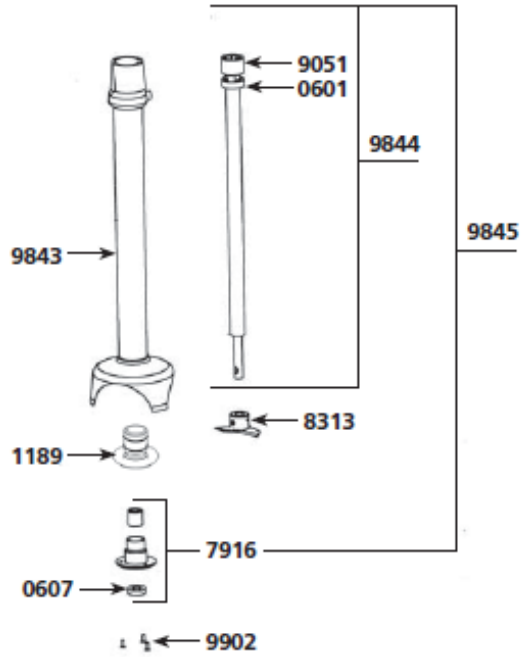
TECHNICAL SHEET

PMDH / PMF 250 MOTOR BLOCK

Parts list	Code
Carbon brushes (2)	0514
Ball bearing	0601
Squeezing washer	0726
Wall bracket	0880
Non-locking switch	0908
Capacitor	0909
Strain relief 230 V	0950
Strain relief 115V	0950.1
Warning label	1017
Dynamic label	1027
Label w/ serial number 230 V	1071
Label w/ serial number 115 V	1072
Variable speed control board 230 V	1213
Variable speed control board 115 V	1214
Brace screws (4)	7903
Braces (4)	7913.F
Variable speed control knob	8609
Power cord 230 V	9011
Stator screws (2)	9023
Self-lubricating ring	9025
Coupler for armature	9028
Power cord 115 V	9040
Power cord (UK)	9067
Handle screws (3)	9502
Switch protector	9813
Upper motor casing	9817
Fan	9818
Rotor w/ o coupling 230 V	9819
Rotor w/o coupling 115 V	9819.1
Stator 230 V w/ carter, carbon brushes holders	9820
Stator 115 V w/ carter, carbon brushes holders	9820.1
Upper half handle	9832
Complete handle 230 V	9840
Complete handle 115 V	9840.1
Lower half handle w/ label 230 V	9841
Lower half handle w/ label 115 V	9841.1
Aluminium carter + ball bearing	9842
BM 250 Motor block (see machine catalogue)	AC005



PMF - PMDH 250 mixer tool



Parts list

Code

Ball bearing	0601
Waterproof seal	0607
Bearing holder + seal	1189
Lower ball bearing assembly (w/ o screws)	7916
Cutter blade (w/ screw)	8313
Coupling casing + pins	9051
Tube assembly + bearing	9843
Shaft & coupling sleeve	9844
Shaft, lower bearing & cutter assembly	9845
Lower bearing screws (3)	9902
M 250 Complete Mixer tool (see machine catalogue)	AC006